

# CATÁLOGO INDUSTRIAL



2019



# Índice

	Pág.
Introducción . . . . .	1
Industrial . . . . .	2
Codo 90° Soldable . . . . .	4
Codo 90° Roscado . . . . .	4
Codo 45° Soldable . . . . .	5
Codo 45° Roscado . . . . .	5
Tee Recta Soldable . . . . .	6
Tee Recta Rosca . . . . .	6
Tapón Macho Roscado . . . . .	7
Tapón Capa Soldable . . . . .	7
Tapón Capa Roscado . . . . .	8
Tuerca Unión Roscada . . . . .	8
Cople Roscado . . . . .	9
Medio Cople Roscado . . . . .	9
Cruz Roscada . . . . .	9
Reducción Bushing . . . . .	10
Reducción Camapana . . . . .	11
Reducción Concéntrica y Excéntrica . . . . .	12
Brida Welding-Neck . . . . .	14
Brida Slip-On . . . . .	14
Brida Lap Joint . . . . .	15
Brida Socket Welding . . . . .	15
Brida Ciega . . . . .	16
Niple . . . . .	16
Válvula Mariposa Tipo Wafer . . . . .	18
Válvula Bola Roscada Paso Cmpleso . . . . .	18
Válvula Bola Roscada (3 pzs) . . . . .	18
Válvula Check Roscada . . . . .	19
Válvula Bola Roscado AC . . . . .	19
Abrazadera Tipo U . . . . .	19
Tubería Pipe Con Costura . . . . .	20
Tubería Pipe Sin Costura . . . . .	22
Tubing . . . . .	23



Diminox es una empresa 100% mexicana, proveedor de conexiones, materiales y tubería en acero inoxidable para aplicaciones: sanitarias, industriales y ornamentales. Con más de 6 años de experiencia en la industria.

Comprometidos a otorgar el mejor servicio a nuestros clientes, contamos con el stock más amplio del mercado, diferenciándonos de los demás por la gran cantidad de productos que manejamos en inoxidable.



Nos caracterizamos por apoyarlos con asesoramiento en sus proyectos, nos involucramos para ofrecerle lo que realmente necesitan para una mayor calidad y durabilidad del producto en inoxidable.

En Diminox estamos comprometidos con todos los productos que manejamos, ya que nos respaldamos cumpliendo con las normas de calidad nacionales e internacionales.



Catálogo Diminox  
Industrial  
Año: 2019





# PRODUCTO INDUSTRIAL



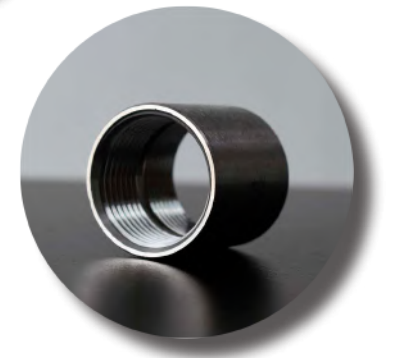
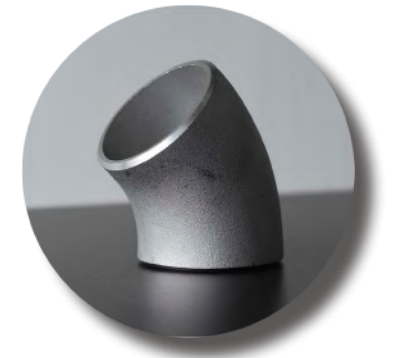
## INDUSTRIAL

### Descripción:

Las conexiones y tubería industriales son usadas principalmente en líneas de proceso químicos, petroquímicos, alimenticio e industria en general. Existen distintos tipos de conexiones y tubería industrial, las más conocidas son las conexiones roscables (NPT) y soldables a tope (en Ced. 40 y 80). Estas pueden ser en Acero Inoxidable 304, 304L y 316, 316L.

- **Conexiones Roscadas (National Pipe Thread):** Permite que la que la tubería y las conexiones se “suelden” fuertemente cuando se juntan, creando una unión muy resistente mecánicamente y a pruebas de fugas.

- **Soldables:** Son soldables a tope y son usadas para líneas de proceso permanentes que no serán desmontadas.



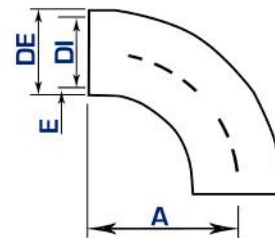
En la tubería Pipe o tubería de cedula la más utilizada es bajo la norma A312, la cual puede ser en cedulas 10, 40 y 80. En México las más utilizadas son en acero inoxidable 304, 304L y 316/316L.

ELEMENTO	REQUERIMIENTOS MÁXIMOS EN %			
	AI 304	AI 304L	AI 316	AI 316L
CARBONO (C)	0.08	0.035	0.08	0.035
MANGANESO (Mn)	2.0	2.0	2.0	2.0
FÓSFORO (P)	0.045	0.045	0.045	0.045
AZUFRE (S)	0.030	0.030	0.030	0.030
SILICIO (Si)	1.0	1.0	1.0	1.0
NIQUEL (Ni)	8.0 - 11.0	8.0 - 12.0	10.0 - 14.0	10.0 - 14.0
CROMO (Cr)	18.0 - 20.0	18.0 - 20.0	16.0 - 18.0	16.0 - 18.0
MOLIBDENO (Mo)	N/A	N/A	2.0 - 3.0	2.0 - 3.0
FIERRO (Fe) Y OTRO	% Restante	% Restante	% Restante	% Restante

**Codo de 90° Extremos Soldables**  
Tipo 304 / 316L

**CODSOL**

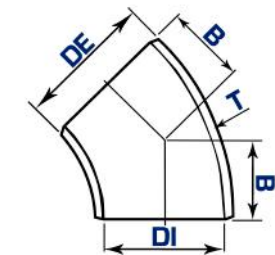
CLAVE	TAMAÑO NOMINAL	Cedula 10				Cedula 40							
		inche	mm	inche	mm	inche	mm	inche	mm				
DMI CODSOL	1/2"	0.840"	21.33	0.674"	17.12	0.083"	2.11	0.622"	15.79	0.109"	2.77	0.625"	15.87
DMI CODSOL	3/4"	1.050"	26.67	0.884"	22.45	0.083"	2.11	0.824"	20.93	0.113"	2.87	0.437"	11.09
DMI CODSOL	1"	1.315"	33.40	1.097"	27.86	0.109"	2.77	1.049"	26.64	0.133"	3.37	0.875"	22.22
DMI CODSOL	1-1/4"	1.660"	42.16	1.442"	36.62	0.109"	2.77	1.380"	35.05	0.140"	3.55	1.000"	25.40
DMI CODSOL	1-1/2"	1.900"	48.26	1.682"	42.72	0.109"	2.77	1.610"	40.89	0.145"	3.68	1.125"	28.57
DMI CODSOL	2"	2.375"	60.32	2.157"	54.78	0.109"	2.77	2.067"	52.50	0.154"	3.91	1.375"	34.92
DMI CODSOL	2-1/2"	2.875"	73.02	2.635"	66.93	0.120"	3.04	2.469"	62.71	0.203"	5.15	1.750"	44.45
DMI CODSOL	3"	3.500"	88.90	3.260"	82.80	0.120"	3.04	3.068"	77.92	0.216"	5.48	2.000"	50.80
DMI CODSOL	3-1/2"	4.000"	101.6	3.760"	95.50	0.120"	3.04	3.548"	90.11	0.226"	5.74	2.250"	57.15
DMI CODSOL	4"	4.500"	114.3	4.260"	108.20	0.120"	3.04	4.026"	102.26	0.237"	6.01	2.500"	63.50
DMI CODSOL	5"	5.563"	141.30	5.295"	134.49	0.134"	3.40	5.047"	128.19	0.258"	6.55	3.125"	79.37
DMI CODSOL	6"	6.625"	168.75	6.357"	161.46	0.134"	3.40	6.065"	154.05	0.280"	7.11	3.750"	95.25
DMI CODSOL	8"	8.625"	219.07	8.329"	211.55	0.148"	3.76	7.981"	202.71	0.322"	8.17	5.000"	127.00
DMI CODSOL	10"	10.750"	273.05	10.420"	264.66	0.165"	4.19	10.020"	254.50	0.365"	9.27	6.250"	158.75
DMI CODSOL	12"	12.750"	323.85	12.390"	314.70	0.180"	4.57	12.000"	304.8	0.375"	9.52	7.500"	190.50
DMI CODSOL	14"	14.000"	355.60	13.624"	346.05	0.188"	4.77	13.250"	336.55	0.375"	9.52	8.750"	222.25
DMI CODSOL	16"	16.000"	406.40	15.624"	396.85	0.188"	4.77	15.250"	387.35	0.375"	9.52	10.000"	254.00
DMI CODSOL	18"	18.000"	457.20	17.624"	447.65	0.188"	4.77	17.250"	438.15	0.375"	9.52	11.250"	285.75
DMI CODSOL	20"	20.000"	508.00	19.564"	496.92	0.218"	5.54	19.250"	488.95	0.375"	9.52	12.500"	317.50
DMI CODSOL	24"	24.000"	609.60	23.500"	596.90	0.250"	6.35	23.250"	590.55	0.375"	9.52	15.000"	381.00



**CODSOL**

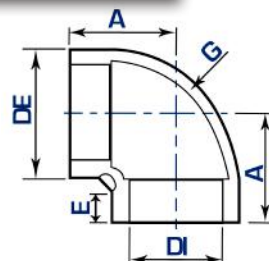
**Codo de 45° Extremos Soldables**  
Tipo 304 / 316L

CLAVE	TAMAÑO NOMINAL	Cedula 10				Cedula 40							
		inche	mm	inche	mm	inche	mm	inche	mm				
DMI CODSOL	1/2"	0.840"	21.33	0.674"	17.12	0.083"	2.11	0.622"	15.79	0.109"	2.77	0.625"	15.87
DMI CODSOL	3/4"	1.050"	26.67	0.884"	22.45	0.083"	2.11	0.824"	20.93	0.113"	2.87	0.437"	11.09
DMI CODSOL	1"	1.315"	33.40	1.097"	27.86	0.109"	2.77	1.049"	26.64	0.133"	3.37	0.875"	22.22
DMI CODSOL	1-1/4"	1.660"	42.16	1.442"	36.62	0.109"	2.77	1.380"	35.05	0.140"	3.55	1.000"	25.40
DMI CODSOL	1-1/2"	1.900"	48.26	1.682"	42.72	0.109"	2.77	1.610"	40.89	0.145"	3.68	1.125"	28.57
DMI CODSOL	2"	2.375"	60.32	2.157"	54.78	0.109"	2.77	2.067"	52.50	0.154"	3.91	1.375"	34.92
DMI CODSOL	2-1/2"	2.875"	73.02	2.635"	66.93	0.120"	3.04	2.469"	62.71	0.203"	5.15	1.750"	44.45
DMI CODSOL	3"	3.500"	88.90	3.260"	82.80	0.120"	3.04	3.068"	77.92	0.216"	5.48	2.000"	50.80
DMI CODSOL	3-1/2"	4.000"	101.6	3.760"	95.50	0.120"	3.04	3.548"	90.11	0.226"	5.74	2.250"	57.15
DMI CODSOL	4"	4.500"	114.3	4.260"	108.20	0.120"	3.04	4.026"	102.26	0.237"	6.01	2.500"	63.50
DMI CODSOL	5"	5.563"	141.30	5.295"	134.49	0.134"	3.40	5.047"	128.19	0.258"	6.55	3.125"	79.37
DMI CODSOL	6"	6.625"	168.75	6.357"	161.46	0.134"	3.40	6.065"	154.05	0.280"	7.11	3.750"	95.25
DMI CODSOL	8"	8.625"	219.07	8.329"	211.55	0.148"	3.76	7.981"	202.71	0.322"	8.17	5.000"	127.00
DMI CODSOL	10"	10.750"	273.05	10.420"	264.66	0.165"	4.19	10.020"	254.50	0.365"	9.27	6.250"	158.75
DMI CODSOL	12"	12.750"	323.85	12.390"	314.70	0.180"	4.57	12.000"	304.8	0.375"	9.52	7.500"	190.50
DMI CODSOL	14"	14.000"	355.60	13.624"	346.05	0.188"	4.77	13.250"	336.55	0.375"	9.52	8.750"	222.25
DMI CODSOL	16"	16.000"	406.40	15.624"	396.85	0.188"	4.77	15.250"	387.35	0.375"	9.52	10.000"	254.00
DMI CODSOL	18"	18.000"	457.20	17.624"	447.65	0.188"	4.77	17.250"	438.15	0.375"	9.52	11.250"	285.75
DMI CODSOL	20"	20.000"	508.00	19.564"	496.92	0.218"	5.54	19.250"	488.95	0.375"	9.52	12.500"	317.50
DMI CODSOL	24"	24.000"	609.60	23.500"	596.90	0.250"	6.35	23.250"	590.55	0.375"	9.52	15.000"	381.00



**Codo de 90° Roscado**  
Tipo 304 / 316L

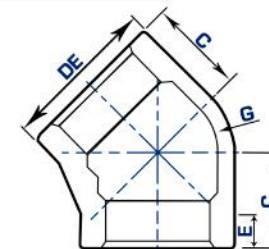
**CODRSC**



CLAVE	TAMAÑO NOMINAL	inche	mm	inche	mm	inche	mm	inche	mm	inche	mm
DMI CODRSC	1/8"	0.750"	19.05	0.125"	3.17	0.810"	20.57	0.200"	5.08	0.090"	2.28
DMI CODRSC	1/4"	0.840"	21.33	0.250"	6.35	0.810"	20.57	0.200"	5.08	0.090"	2.28
DMI CODRSC	3/8"	1.010"	25.65	0.375"	9.52	0.930"	23.62	0.210"	5.33	0.100"	2.54
DMI CODRSC	1/2"	1.200"	30.48	0.500"	12.70	1.120"	28.44	0.250"	6.35	0.100"	2.54
DMI CODRSC	3/4"	1.460"	37.08	0.750"	19.05	1.310"	33.27	0.270"	6.85	0.120"	3.04
DMI CODRSC	1"	1.770"	44.95	1.000"	25.40	1.500"	38.10	0.300"	7.62	0.130"	3.30
DMI CODRSC	1-1/4"	2.150"	54.61	1.250"	31.75	1.750"	44.45	0.340"	8.63	0.140"	3.55
DMI CODRSC	1-1/2"	2.430"	61.72	1.500"	38.10	1.930"	49.02	0.370"	9.39	0.150"	3.81
DMI CODRSC	2"	2.960"	75.18	2.000"	50.80	2.250"	57.15	0.420"	10.66	0.170"	4.31
DMI CODRSC	2-1/2"	3.310"	84.07	2.500"	63.50	2.680"	68.07	0.480"	12.19	0.210"	5.33
DMI CODRSC	3"	4.000"	101.60	3.000"	76.20	3.060"	77.72	0.550"	13.97	0.230"	5.84
DMI CODRSC	4"	5.060"	128.52	4.000"	101.60	3.810"	96.77	0.660"	16.76	0.260"	6.60

**CODRSC**

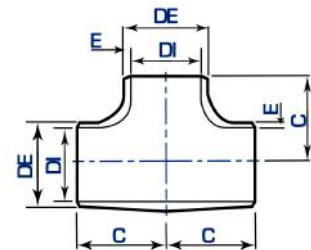
**Codo 45° Roscado**  
Tipo 304 / 316L



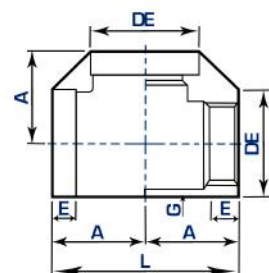
CLAVE	TAMAÑO NOMINAL	inche	mm	inche	mm	inche	mm	inche	mm	inche	mm
DMI CODRSC	1/8"	0.750"	19.05	0.125"	3.17	0.690"	17.52	0.200"	5.08	0.090"	2.28
DMI CODRSC	1/4"	0.840"	21.33	0.250"	6.35	0.690"	17.52	0.200"	5.08	0.090"	2.28
DMI CODRSC	3/8"	1.020"	25.90	0.375"	9.52	0.810"	20.57	0.210"	5.33	0.100"	2.54
DMI CODRSC	1/2"	1.210"	30.73	0.500"	12.70	0.870"	22.09	0.250"	6.35	0.100"	2.54
DMI CODRSC	3/4"	1.460"	37.08	0.750"	19.05	1.000"	25.40	0.270"	6.85	0.120"	3.04
DMI CODRSC	1"	1.770"	44.95	1.000"	25.40	1.120"	28.44	0.300"	7.62	0.130"	3.30
DMI CODRSC	1-1/4"	2.150"	54.61	1.250"	31.75	1.310"	33.27	0.340"	8.63	0.140"	3.55
DMI CODRSC	1-1/2"	2.430"	61.72	1.500"	38.10	1.430"	36.32	0.370"	9.39	0.150"	3.81
DMI CODRSC	2"	2.960"	75.18	2.000"	50.80	1.680"	42.67	0.420"	10.66	0.170"	4.31
DMI CODRSC	2-1/2"	3.310"	84.07	2.500"	63.50	1.930"	49.02	0.480"	12.19	0.210"	5.33
DMI CODRSC	3"	4.000"	101.60	3.000"	76.20	2.180"	55.37	0.550"	13.97	0.230"	5.84
DMI CODRSC	4"	5.060"	128.52	4.000"	101.60	2.620"	66.54	0.660"	16.76	0.260"	6.60

**Te Recta Soldable**  
Tipo 304 / 316L **TEESOL**

CLAVE	TAMAÑO NOMINAL	Cedula 10			Cedula 40			C					
		inche	mm	inche	mm	inche	mm						
DMI TEESOL	1/2"	0.840"	21.33	0.674"	17.12	0.083"	2.11	0.622"	15.79	0.109"	2.77	1.000"	25.40
DMI TEESOL	3/4"	1.050"	26.67	0.884"	22.45	0.083"	2.11	0.824"	20.93	0.113"	2.87	1.125"	28.57
DMI TEESOL	1"	1.315"	33.40	1.097"	27.86	0.109"	2.77	1.049"	26.64	0.133"	3.37	1.500"	38.10
DMI TEESOL	1-1/4"	1.660"	42.16	1.442"	36.62	0.109"	2.77	1.380"	35.05	0.140"	3.55	1.875"	47.62
DMI TEESOL	1-1/2"	1.900"	48.26	1.682"	42.72	0.109"	2.77	1.610"	40.89	0.145"	3.68	2.250"	57.15
DMI TEESOL	2"	2.375"	60.32	2.157"	54.78	0.109"	2.77	2.067"	52.50	0.154"	3.91	2.500"	63.50
DMI TEESOL	2-1/2"	2.875"	73.02	2.635"	66.93	0.120"	3.04	2.469"	62.71	0.203"	5.15	3.000"	76.20
DMI TEESOL	3"	3.500"	88.90	3.260"	82.80	0.120"	3.04	3.068"	77.92	0.216"	5.48	3.375"	85.72
DMI TEESOL	3-1/2"	4.000"	101.6	3.760"	95.50	0.120"	3.04	3.548"	90.11	0.226"	5.74	3.750"	95.25
DMI TEESOL	4"	4.500"	114.3	4.260"	108.20	0.120"	3.04	4.026"	102.26	0.237"	6.01	4.125"	104.77
DMI TEESOL	5"	5.563"	141.30	5.295"	134.49	0.134"	3.40	5.047"	128.19	0.258"	6.55	4.875"	123.82
DMI TEESOL	6"	6.625"	168.26	6.357"	161.46	0.134"	3.40	6.065"	154.05	0.280"	7.11	5.625"	142.87
DMI TEESOL	8"	8.625"	219.07	8.329"	211.55	0.148"	3.76	7.981"	202.71	0.322"	8.17	7.000"	177.80
DMI TEESOL	10"	10.750"	273.05	10.420"	264.66	0.165"	4.19	10.020"	254.50	0.365"	9.27	8.500"	215.90
DMI TEESOL	12"	12.750"	323.85	12.390"	314.70	0.180"	4.57	12.000"	304.8	0.375"	9.52	10.000"	254.00
DMI TEESOL	14"	14.000"	355.60	13.624"	346.05	0.188"	4.77	13.250"	336.55	0.375"	9.52	11.000"	279.40
DMI TEESOL	16"	16.000"	406.40	15.624"	396.85	0.188"	4.77	15.250"	387.35	0.375"	9.52	12.000"	304.80
DMI TEESOL	18"	18.000"	457.20	17.624"	447.65	0.188"	4.77	17.250"	438.15	0.375"	9.52	13.500"	342.90
DMI TEESOL	20"	20.000"	508.00	19.564"	496.92	0.218"	5.54	19.250"	488.95	0.375"	9.52	15.000"	381.00
DMI TEESOL	24"	24.000"	609.60	23.500"	596.90	0.250"	6.35	23.250"	590.55	0.375"	9.52	17.000"	431.80



**Tee Roscado**  
Tipo 304 / 316L **TEERSC**

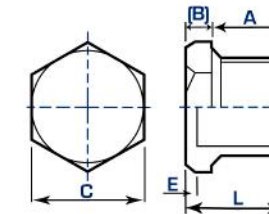


CLAVE	TAMAÑO NOMINAL	Cedula 10			Cedula 40			L	S		
		inche	mm	inche	mm	inche	mm				
DMI TEERSC	1/8"	0.750"	19.05	0.125"	3.17	0.810"	20.57	0.200"	5.08	0.090"	2.28
DMI TEERSC	1/4"	0.840"	21.33	0.250"	6.35	0.810"	20.57	0.200"	5.08	0.090"	2.28
DMI TEERSC	3/8"	1.010"	25.65	0.375"	9.52	0.930"	23.62	0.210"	5.33	0.100"	2.54
DMI TEERSC	1/2"	1.200"	30.48	0.500"	12.70	1.120"	28.44	0.250"	6.35	0.100"	2.54
DMI TEERSC	3/4"	1.460"	37.08	0.750"	19.05	1.310"	33.27	0.270"	6.85	0.120"	3.04
DMI TEERSC	1"	1.770"	44.95	1.000"	25.40	1.500"	38.10	0.300"	7.62	0.130"	3.30
DMI TEERSC	1-1/4"	2.150"	54.61	1.250"	31.75	1.750"	44.45	0.340"	8.63	0.140"	3.55
DMI TEERSC	1-1/2"	2.430"	61.72	1.500"	38.10	1.930"	49.02	0.370"	9.39	0.150"	3.81
DMI TEERSC	2"	2.960"	75.18	2.000"	50.80	2.250"	57.15	0.420"	10.66	0.170"	4.31
DMI TEERSC	2-1/2"	3.310"	84.07	2.500"	63.50	2.680"	68.07	0.480"	12.19	0.210"	5.33
DMI TEERSC	3"	4.000"	101.60	3.000"	76.20	3.060"	77.72	0.550"	13.97	0.230"	5.84
DMI TEERSC	4"	5.060"	128.52	4.000"	101.60	3.810"	96.77	0.660"	16.76	0.260"	6.60

**TAPMARSC**

**Tapón Macho Roscado**  
Tipo 304 / 316L

CLAVE	TAMAÑO NOMINAL	A		B		C		E		L	
		inche	mm	inche	mm	inche	mm	inche	mm	inche	mm
DMI TAPMARSC	1/8"	0.370"	9.39	0.140"	3.55	0.550"	13.97	---	---	0.510"	12.95
DMI TAPMARSC	1/4"	0.440"	11.17	0.140"	3.55	0.670"	17.01	---	---	0.580"	14.73
DMI TAPMARSC	3/8"	0.480"	12.19	0.160"	4.06	0.830"	21.08	---	---	0.640"	16.25
DMI TAPMARSC	1/2"	0.560"	14.22	0.190"	4.82	1.020"	25.90	0.160"	4.06	0.760"	19.30
DMI TAPMARSC	3/4"	0.630"	16.00	0.220"	5.58	1.200"	30.48	0.180"	4.57	0.850"	21.59
DMI TAPMARSC	1"	0.750"	19.05	0.250"	6.35	1.430"	36.32	0.200"	5.08	1.000"	25.40
DMI TAPMARSC	1-1/4"	0.800"	20.32	0.280"	7.11	1.760"	44.70	0.220"	5.58	1.090"	27.68
DMI TAPMARSC	1-1/2"	0.830"	21.08	0.310"	7.87	2.000"	50.80	0.240"	6.09	1.140"	28.95
DMI TAPMARSC	2"	0.880"	22.35	0.310"	7.87	2.000"	50.80	0.240"	6.09	1.140"	28.95
DMI TAPMARSC	2-1/2"	1.070"	27.17	0.370"	9.39	2.980"	75.69	0.290"	7.36	1.440"	36.57
DMI TAPMARSC	3"	1.130"	28.70	0.400"	10.16	3.860"	98.04	0.310"	7.87	1.530"	38.86
DMI TAPMARSC	4"	1.220"	30.98	0.500"	12.70	4.630"	117.60	0.380"	9.65	1.720"	43.68

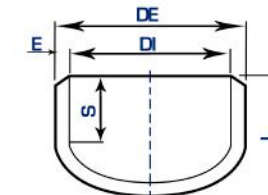


- \* Cabeza:
- Hexágono
  - Cuadrada

**TAPCAP**

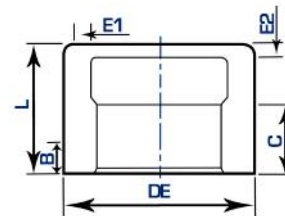
**Tapón Capa Soldable**  
Tipo 304 / 316L

CLAVE	TAMAÑO NOMINAL	Cedula 10			Cedula 40			L	S						
		inche	mm	inche	mm	inche	mm								
DMI TAPCAP	1/2"	0.840"	21.33	0.674"	17.12	0.083"	2.11	0.622"	15.79	0.109"	2.77	1.000"	25.40	0.740"	18.79
DMI TAPCAP	3/4"	1.050"	26.67	0.884"	22.45	0.083"	2.11	0.824"	20.93	0.113"	2.87	1.000"	25.40	0.680"	17.27
DMI TAPCAP	1"	1.315"	33.40	1.097"	27.86	0.109"	2.77	1.049"	26.64	0.133"	3.37	1.500"	38.10	1.100"	27.94
DMI TAPCAP	1-1/4"	1.660"	42.16	1.442"	36.62	0.109"	2.77	1.380"	35.05	0.140"	3.55	1.500"	38.10	1.020"	25.90
DMI TAPCAP	1-1/2"	1.900"	48.26	1.682"	42.72	0.109"	2.77	1.610"	40.89	0.145"	3.68	1.500"	38.10	0.950"	24.13
DMI TAPCAP	2"	2.375"	60.32	2.157"	54.78	0.109"	2.77	2.067"	52.50	0.154"	3.91	1.500"	38.10	0.830"	21.08
DMI TAPCAP	2-1/2"	2.875"	73.02	2.635"	66.93	0.120"	3.04	2.469"	62.71	0.203"	5.15	1.500"	38.10	0.680"	17.27
DMI TAPCAP	3"	3.500"	88.90	3.260"	82.80	0.120"	3.04	3.068"	77.92	0.216"	5.48	2.000"	50.80	1.020"	25.90
DMI TAPCAP	3-1/2"	4.000"	101.6	3.760"	95.50	0.120"	3.04	3.548"	90.11	0.226"	5.74	2.500"	63.50	1.400"	35.56
DMI TAPCAP	4"	4.500"	114.3	4.260"	108.20	0.120"	3.04	4.026"	102.26	0.237"	6.01	2.500"	63.50	1.260"	32.00
DMI TAPCAP	5"	5.563"	141.30	5.295"	134.49	0.134"	3.40	5.047"	128.19	0.258"	6.55	3.000"	76.20	1.480"	37.59
DMI TAPCAP	6"	6.625"	168.26	6.357"	161.46	0.134"	3.40	6.065"	154.05	0.280"	7.11	3.500"	88.90	1.700"	43.18
DMI TAPCAP	8"	8.625"	219.07	8.329"	211.55	0.148"	3.76	7.981"	202.71	0.322"	8.17	4.000"	101.60	1.680"	42.67
DMI TAPCAP	10"	10.750"	273.05	10.420"	264.66	0.165"	4.19	10.020"	254.50	0.365"	9.27	5.000"	127.00	2.130"	54.10
DMI TAPCAP	12"	12.750"	323.85	12.390"	314.70	0.180"	4.57	12.000"	304.8	0.375"	9.52	6.000"	152.40	2.630"	66.80
DMI TAPCAP	14"	14.000"	355.60	13.624"	346.05	0.188"	4.77	13.250"	336.55	0.375"	9.52	6.500"	165.10	2.810"	71.37
DMI TAPCAP	16"	16.000"	406.40	15.624"	396.85	0.188"	4.77	15.250"	387.35	0.375"	9.52	7.000"	177.80	2.810"	71.37
DMI TAPCAP	18"	18.000"	457.20	17.624"	447.65	0.188"	4.77	17.250"	438.15	0.375"	9.52	8.000"	203.20	3.810"	96.77
DMI TAPCAP	20"	20.000"	508.00	19.564"	496.92	0.218"	5.54	19.250"	488.95	0.375"	9.52	9.000"	228.60	3.810"	96.77
DMI TAPCAP	24"	24.000"	609.60	23.500"	596.90	0.250"	6.35	23.250"	590.55	0.375"	9.52	10.500"	266.70	4.310"	109.47



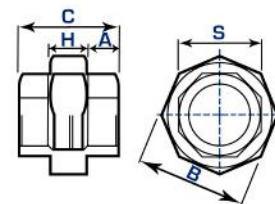
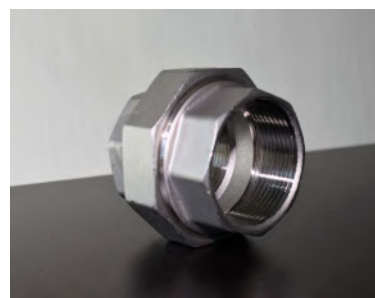
**Tapón Capa Roscado**  
Tipo 304 / 316L **TAPCAPRSC**

CLAVE	TAMAÑO NOMINAL	DE	E1	E2	L	C	B
	inche	mm	inche	mm	inche	mm	inche
DMI TAPCAPRSC	1/8"	19.05	0.090"	2.28	0.680"	17.27	0.200"
DMI TAPCAPRSC	1/4"	21.33	0.090"	2.28	0.680"	17.27	0.320"
DMI TAPCAPRSC	3/8"	25.65	0.100"	2.54	0.810"	20.57	0.360"
DMI TAPCAPRSC	1/2"	30.48	0.100"	2.54	0.930"	23.62	0.430"
DMI TAPCAPRSC	3/4"	37.08	0.120"	3.04	1.060"	26.92	0.500"
DMI TAPCAPRSC	1"	44.95	0.130"	3.30	1.310"	33.27	0.580"
DMI TAPCAPRSC	1-1/4"	54.61	0.140"	3.55	1.620"	41.14	0.670"
DMI TAPCAPRSC	1-1/2"	61.72	0.150"	3.81	1.620"	41.14	0.700"
DMI TAPCAPRSC	2"	75.18	0.170"	4.31	1.750"	44.45	0.750"
DMI TAPCAPRSC	2-1/2"	84.07	0.210"	5.33	2.000"	50.80	0.920"
DMI TAPCAPRSC	3"	101.60	0.230"	5.84	2.250"	57.15	0.980"
DMI TAPCAPRSC	4"	128.52	0.260"	6.60	2.500"	63.50	1.080"



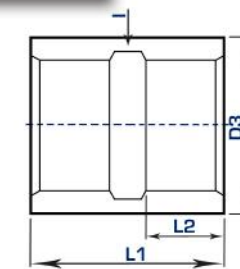
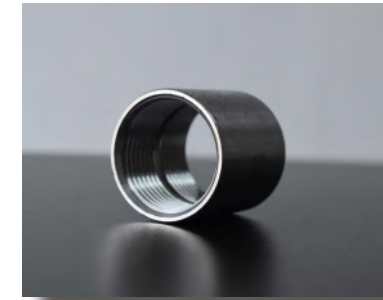
**Tuerca Unión Roscada**  
Tipo 304 / 316L **TCAUNRSC**

CLAVE	TAMAÑO NOMINAL	A	B	C	H	S
	inche	mm	inche	mm	inche	mm
DMI TCAUNRSC	1/8"	8.63	1.140"	1.260"	0.590"	18.03
DMI TCAUNRSC	1/4"	10.92	1.140"	1.440"	0.590"	18.03
DMI TCAUNRSC	3/8"	13.20	1.420"	1.610"	0.590"	17.52
DMI TCAUNRSC	1/2"	14.47	1.610"	1.720"	0.590"	26.92
DMI TCAUNRSC	3/4"	17.01	1.930"	1.940"	0.610"	32.00
DMI TCAUNRSC	1"	17.27	2.280"	2.060"	0.710"	40.38
DMI TCAUNRSC	1-1/4"	18.28	2.670"	2.260"	0.840"	50.03
DMI TCAUNRSC	1-1/2"	19.81	3.020"	2.410"	0.870"	55.88
DMI TCAUNRSC	2"	22.60	3.600"	2.750"	0.980"	69.08
DMI TCAUNRSC	2-1/2"	28.19	4.290"	3.220"	0.980"	85.34
DMI TCAUNRSC	3"	29.97	4.920"	3.500"	1.150"	100.07
DMI TCAUNRSC	4"	32.00	6.140"	3.850"	1.350"	127.00



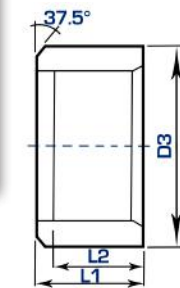
**COPRSC** **Cople Roscado**  
Tipo 304 / 316L

CLAVE	TAMAÑO NOMINAL	D3	I	L1	L2
	inche	mm	inche	mm	mm
DMI COPRSC	1/8"	19.05	0.090"	2.28	1.000"
DMI COPRSC	1/4"	21.33	0.090"	2.28	1.000"
DMI COPRSC	3/8"	25.65	0.100"	2.54	1.120"
DMI COPRSC	1/2"	30.48	0.100"	2.54	1.380"
DMI COPRSC	3/4"	37.08	0.120"	3.04	1.500"
DMI COPRSC	1"	44.95	0.130"	3.30	1.620"
DMI COPRSC	1-1/4"	54.61	0.140"	3.55	2.000"
DMI COPRSC	1-1/2"	61.72	0.150"	3.81	2.120"
DMI COPRSC	2"	75.18	0.170"	4.31	2.500"
DMI COPRSC	2-1/2"	84.07	0.210"	5.33	2.870"
DMI COPRSC	3"	101.60	0.230"	5.84	3.180"
DMI COPRSC	4"	128.52	0.260"	6.60	3.680"



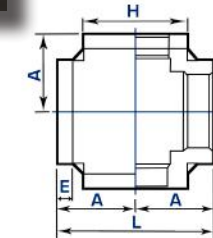
**MCOPRSC** **Medio Cople Roscado**  
Tipo 304 / 316L

CLAVE	TAMAÑO NOMINAL	D3	L1	L2
	inche	mm	inche	mm
DMI MCOPRSC	1/8"	19.05	0.500"	0.250"
DMI MCOPRSC	1/4"	21.33	0.500"	0.320"
DMI MCOPRSC	3/8"	25.65	0.560"	0.360"
DMI MCOPRSC	1/2"	30.48	0.690"	0.430"
DMI MCOPRSC	3/4"	37.08	0.750"	0.500"
DMI MCOPRSC	1"	44.95	0.810"	0.580"
DMI MCOPRSC	1-1/4"	54.61	1.000"	0.670"
DMI MCOPRSC	1-1/2"	61.72	1.060"	0.700"
DMI MCOPRSC	2"	75.18	1.250"	0.750"
DMI MCOPRSC	2-1/2"	84.07	1.440"	0.920"
DMI MCOPRSC	3"	101.60	1.590"	0.980"
DMI MCOPRSC	4"	128.52	1.840"	1.080"



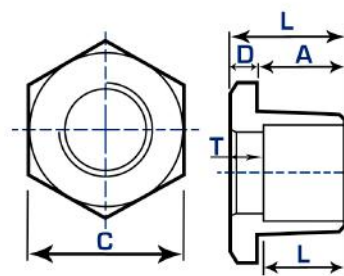
**CRUZRSC** **Cruz Roscado**  
Tipo 304 / 316L

CLAVE	TAMAÑO NOMINAL	A	E	G	H	L
	inche	mm	inche	mm	inche	mm
DMI CRUZRSC	1/8"	20.57	0.200"	5.08	0.090"	2.28
DMI CRUZRSC	1/4"	20.57	0.200"	5.08	0.090"	2.28
DMI CRUZRSC	3/8"	23.62	0.210"	5.33	0.100"	2.54
DMI CRUZRSC	1/2"	28.44	0.250"	6.35	0.100"	2.54
DMI CRUZRSC	3/4"	33.27	0.270"	6.85	0.120"	3.04
DMI CRUZRSC	1"	38.10	0.300"	7.62	0.130"	3.30
DMI CRUZRSC	1-1/4"	44.45	0.340"	8.63	0.140"	3.55
DMI CRUZRSC	1-1/2"	49.02	0.370"	9.39	0.150"	3.81
DMI CRUZRSC	2"	57.15	0.420"	10.66	0.170"	4.31
DMI CRUZRSC	2-1/2"	68.07	0.480"	12.19	0.210"	5.33
DMI CRUZRSC	3"	77.72	0.550"	13.97	0.230"	5.84
DMI CRUZRSC	4"	96.77	0.660"	16.76	0.260"	6.60



**Reducción Bushing**  
Tipo 304 / 316L **RBRSC**

CLAVE	TAMAÑO NOMINAL	A		C		D		L		T	
		inche	mm	inche	mm	inche	mm	inche	mm	inche	mm
DMI RBRSC	1/4"x1/8"	0.440"	11.17	0.630"	16.00	0.120"	3.04	0.560"	14.22	0.300"	7.62
DMI RBRSC	3/8"x1/8"	0.500"	12.70	0.870"	22.09	0.160"	4.06	0.660"	16.76	0.300"	7.62
DMI RBRSC	3/8"x1/4"	0.500"	12.70	0.870"	22.09	0.160"	4.06	0.660"	16.76	---	---
DMI RBRSC	1/2"x1/8"	0.560"	14.22	1.000"	25.40	0.190"	4.82	0.760"	19.30	0.300"	7.62
DMI RBRSC	1/2"x1/4"	0.560"	14.22	1.000"	25.40	0.190"	4.82	0.760"	19.30	0.460"	11.68
DMI RBRSC	1/2"x3/8"	0.560"	14.22	1.000"	25.40	0.190"	4.82	0.760"	19.30	---	---
DMI RBRSC	3/4"x1/8"	0.620"	15.74	1.240"	31.49	0.220"	5.58	0.840"	21.33	0.300"	7.62
DMI RBRSC	3/4"x1/4"	0.620"	15.74	1.240"	31.49	0.220"	5.58	0.840"	21.33	0.460"	11.68
DMI RBRSC	3/4"x3/8"	0.620"	15.74	1.240"	31.49	0.220"	5.58	0.840"	21.33	0.460"	11.68
DMI RBRSC	3/4"x1/2"	0.620"	15.74	1.240"	31.49	0.220"	5.58	0.840"	21.33	---	---
DMI RBRSC	1"x1/8"	0.750"	19.05	1.370"	34.79	0.250"	6.35	1.000"	25.40	0.300"	7.62
DMI RBRSC	1"x1/4"	0.750"	19.05	1.370"	34.79	0.250"	6.35	1.000"	25.40	0.460"	11.68
DMI RBRSC	1"x3/8"	0.750"	19.05	1.370"	34.79	0.250"	6.35	1.000"	25.40	0.460"	11.68
DMI RBRSC	1"x1/2"	0.750"	19.05	1.370"	34.79	0.250"	6.35	1.000"	25.40	0.600"	15.24
DMI RBRSC	1"x3/4"	0.750"	19.05	1.370"	34.79	0.250"	6.35	1.000"	25.40	0.620"	15.74
DMI RBRSC	1-1/4"x1/4"	0.810"	20.57	1.750"	44.45	0.280"	7.11	1.090"	27.68	0.460"	11.68
DMI RBRSC	1-1/4"x3/8"	0.810"	20.57	1.750"	44.45	0.280"	7.11	1.090"	27.68	0.460"	11.68
DMI RBRSC	1-1/4"x1/2"	0.810"	20.57	1.750"	44.45	0.280"	7.11	1.090"	27.68	0.600"	15.24
DMI RBRSC	1-1/4"x3/4"	0.810"	20.57	1.750"	44.45	0.280"	7.11	1.090"	27.68	0.620"	15.74
DMI RBRSC	1-1/4"x1"	0.810"	20.57	1.750"	44.45	0.280"	7.11	1.090"	27.68	0.770"	19.55
DMI RBRSC	1-1/2"x1/4"	0.810"	20.57	2.000"	50.80	0.310"	7.87	1.120"	28.44	0.460"	11.68
DMI RBRSC	1-1/2"x3/8"	0.810"	20.57	2.000"	50.80	0.310"	7.87	1.120"	28.44	0.460"	11.68
DMI RBRSC	1-1/2"x1/2"	0.810"	20.57	2.000"	50.80	0.310"	7.87	1.120"	28.44	0.600"	15.24
DMI RBRSC	1-1/2"x3/4"	0.810"	20.57	2.000"	50.80	0.310"	7.87	1.120"	28.44	0.620"	15.74
DMI RBRSC	1-1/2"x1"	0.810"	20.57	2.000"	50.80	0.310"	7.87	1.120"	28.44	0.770"	19.55
DMI RBRSC	1-1/2"x1-1/4"	0.810"	20.57	2.000"	50.80	0.310"	7.87	1.120"	28.44	0.800"	20.32
DMI RBRSC	2"x1/4"	0.880"	22.37	2.500"	63.50	0.340"	8.63	1.220"	30.98	0.460"	11.68
DMI RBRSC	2"x3/8"	0.880"	22.37	2.500"	63.50	0.340"	8.63	1.220"	30.98	0.460"	11.68
DMI RBRSC	2"x1/2"	0.880"	22.37	2.500"	63.50	0.340"	8.63	1.220"	30.98	0.600"	15.24
DMI RBRSC	2"x3/4"	0.880"	22.37	2.500"	63.50	0.340"	8.63	1.220"	30.98	0.620"	15.74
DMI RBRSC	2"x1"	0.880"	22.37	2.500"	63.50	0.340"	8.63	1.220"	30.98	0.770"	19.55
DMI RBRSC	2"x1-1/4"	0.880"	22.37	2.500"	63.50	0.340"	8.63	1.220"	30.98	0.800"	20.32
DMI RBRSC	2"x1-1/2"	0.880"	22.37	2.500"	63.50	0.340"	8.63	1.220"	30.98	0.810"	20.57
DMI RBRSC	2-1/2"x1/2"	1.060"	26.92	3.000"	76.20	0.380"	9.65	1.440"	36.57	0.650"	16.51
DMI RBRSC	2-1/2"x3/4"	1.060"	26.92	3.000"	76.20	0.380"	9.65	1.440"	36.57	0.620"	15.74
DMI RBRSC	2-1/2"x1"	1.060"	26.92	3.000"	76.20	0.380"	9.65	1.440"	36.57	0.750"	19.05
DMI RBRSC	2-1/2"x1-1/4"	1.060"	26.92	3.000"	76.20	0.380"	9.65	1.440"	36.57	0.800"	20.32
DMI RBRSC	2-1/2"x1-1/2"	1.060"	26.92	3.000"	76.20	0.380"	9.65	1.440"	36.57	0.810"	20.57
DMI RBRSC	2-1/2"x2"	1.060"	26.92	3.000"	76.20	0.380"	9.65	1.440"	36.57	0.850"	21.59
DMI RBRSC	3"x1/2"	1.120"	28.44	3.750"	95.25	0.410"	10.41	1.540"	39.11	0.650"	16.51
DMI RBRSC	3"x3/4"	1.120"	28.44	3.750"	95.25	0.410"	10.41	1.540"	39.11	0.620"	15.74
DMI RBRSC	3"x1"	1.120"	28.44	3.750"	95.25	0.410"	10.41	1.540"	39.11	0.750"	19.05
DMI RBRSC	3"x1-1/4"	1.120"	28.44	3.750"	95.25	0.410"	10.41	1.540"	39.11	0.790"	20.06
DMI RBRSC	3"x1-1/2"	1.120"	28.44	3.750"	95.25	0.410"	10.41	1.540"	39.11	0.810"	20.57
DMI RBRSC	3"x2"	1.120"	28.44	3.750"	95.25	0.410"	10.41	1.540"	39.11	0.850"	21.59
DMI RBRSC	3"x2-1/2"	1.120"	28.44	3.750"	95.25	0.410"	10.41	1.540"	39.11	1.230"	31.24
DMI RBRSC	4"x1"	1.250"	31.75	4.630"	117.60	0.600"	15.24	1.850"	46.99	0.770"	19.55
DMI RBRSC	4"x1-1/4"	1.250"	31.75	4.630"	117.60	0.600"	15.24	1.850"	46.99	0.790"	20.06
DMI RBRSC	4"x1-1/2"	1.250"	31.75	4.630"	117.60	0.600"	15.24	1.850"	46.99	0.810"	20.57
DMI RBRSC	4"x2"	1.250"	31.75	4.630"	117.60	0.600"	15.24	1.850"	46.99	0.850"	21.59
DMI RBRSC	4"x2-1/2"	1.250"	31.75	4.630"	117.60	0.600"	15.24	1.850"	46.99	1.230"	31.24
DMI RBRSC	4"x3"	1.250"	31.75	4.630"	117.60	0.600"	15.24	1.850"	46.99	1.330"	33.78

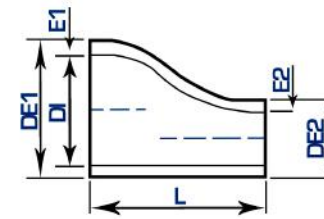
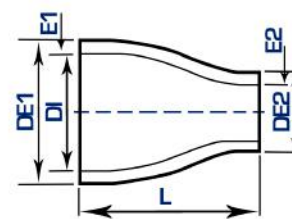


**RCRSC** **Reducción Campana**  
Tipo 304 / 316L

CLAVE	TAMAÑO NOMINAL	h2		H2		B1		B2		E1		E2		M	
		inche	mm	inche	mm	inche	mm	inche	mm	inche	mm	inche	mm	inche	mm
DMI RCRSC	1/4"x1/8"	0.750"	19.05	0.840"	21.33	0.320"	8.12	0.250"	6.35	0.200"	5.08	0.200"	5.08	1.000"	25.40
DMI RCRSC	3/8"x1/8"	0.750"	19.05	1.010"	25.65	0.360"	9.14	0.250"	6.35	0.210"	5.33	0.200"	5.08	1.120"	28.44
DMI RCRSC	3/8"x1/4"	0.840"	21.33	1.010"	25.65	0.360"	9.14	0.320"	8.12	0.210"	5.33	0.200"	5.08	1.120"	28.44
DMI RCRSC	1/2"x1/8"	0.750"	19.05	1.200"	30.48	0.430"	10.92	0.250"	6.35	0.250"	6.35	0.200"	5.08	1.380"	35.05
DMI RCRSC	1/2"x1/4"	0.840"	21.33	1.200"	30.48	0.430"	10.92	0.320"	8.12	0.250"	6.35	0.200"	5.08	1.380"	35.05
DMI RCRSC	1/2"x3/8"	1.010"	25.65	1.200"	30.48	0.430"	10.92	0.360"	9.14	0.250"	6.35	0.210"	5.33	1.380"	35.05
DMI RCRSC	3/4"x1/8"	0.750"	19.05	1.460"	37.08	0.500"	12.70	0.250"	6.35	0.270"	6.85	0.200"	5.08	1.500"	38.10
DMI RCRSC	3/4"x1/4"	0.840"	21.33	1.460"	37.08	0.500"	12.70	0.320"	8.12	0.270"	6.85	0.200"	5.08	1.500"	38.10
DMI RCRSC	3/4"x3/8"	1.010"	25.65	1.460"	37.08	0.500"	12.70	0.360"	9.14	0.270"	6.85	0.210"	5.33	1.500"	38.10
DMI RCRSC	3/4"x1/2"	1.200"	30.48	1.460"	37.08	0.500"	12.70	0.430"	10.92	0.270"	6.85	0.250"	6.35	1.500"	38.10
DMI RCRSC	1"x1/8"	0.750"	19.05	1.770"	44.95	0.580"	14.73	0.250"	6.35	0.300"	7.62	0.200"	5.08	1.620"	41.14
DMI RCRSC	1"x1/4"	0.840"	21.33	1.770"	44.95	0.580"	14.73	0.320"	8.12	0.300"	7.62	0.200"	5.08	1.620"	41.14
DMI RCRSC	1"x3/8"	1.010"	25.65	1.770"	44.95	0.580"	14.73	0.360"	9.14	0.300"	7.62	0.210"	5.33	1.620"	41.14
DMI RCRSC	1"x1/2"	1.200"	30.48	1.770"	44.95	0.580"	14.73	0.430"	10.92	0.300"	7.62	0.250"	6.35	1.620"	41.14
DMI RCRSC	1"x3/4"	1.460"	37.08	1.770"	44.95	0.580"	14.73	0.500"	12.70	0.300"	7.62	0.270"	6.85	1.620"	41.14
DMI RCRSC	1-1/4"x1/4"	1.770"	44.95	2.960"	75.18	0.750"	19.05	0.580"	14.73	0.420"	10.66	0.340"	8.63	2.500"	63.50
DMI RCRSC	1-1/4"x3/8"	2.150"	54.61	2.960"	75.18	0.750"	19.05	0.670"	17.01	0.420"	10.66	0.340"	8.63	2.500"	63.50
DMI RCRSC	1-1/4"x1/2"	2.430"	61.72	2.960"	75.18	0.750"	19.05	0.700"	17.78	0.420"	10.66	0.370"	9.39	2.500"	63.50
DMI RCRSC	1-1/4"x3/4"	1.460"	37.08	3.310"	84.07	0.920"	23.36	0.500"	12.70	0.480"	12.19	0.270"	6.85	3.250"	82.55
DMI RCRSC	1-1/4"x1"	1.770"	44.95	3.310"	84.07	0.920"	23.36	0.580"	14.73	0.480"	12.19	0.300"	7.62	3.250"	82.55
DMI RCRSC	1-1/2"x1/4"	2.150"	54.61	3.310"	84.07	0.920"	23.36	0.670"	17.01	0.480"	12.19	0.340"	8.63	3.250"	82.55
DMI RCRSC	1-1/2"x3/8"	2.430"	61.73	3.310"	84.07	0.920"	23.36	0.700"	17.78	0.480"	12.19	0.370"	9.39	3.250"	82.55
DMI RCRSC	1-1/2"x1/2"	2.960"	75.18	3.310"	84.07	0.920"	23.36	0.750"	19.05	0.480"	12.19	0.420"	10.66	3.250"	82.55
DMI RCRSC	1-1/2"x3/4"	1.460"	37.08	4.000"	101.60	0.980"	24.89	0.500"	12.70	0.550"	13.97	0.270"	6.85	3.680"	93.47
DMI RCRSC	1-1/2"x1"	2.150"	54.61	4.000"	101.60	0.980"	24.89	0.580"	14.73	0.550"	13.97	0.300"	7.62	3.680"	93.47
DMI RCRSC	2"x1/4"	0.840"	21.33	2.960"	75.18	0.750"	19.05	0.320"	8.12	0.420"	10.66	0.200"	5.08	2.500"	63.50
DMI RCRSC	2"x3/8"	1.010"	25.65	2.960"	75.18	0.750"	19.05	0.360"	9.14	0.420"	10.66	0.210"	5.33	2.500"	63.50
DMI RCRSC	2"x1/2"	1.200"	30.48	2.960"	75.18	0.750"	19.05	0.430"	10.92	0.420"	10.66	0.250"	6.35	2.500"	63.50
DMI RCRSC	2"x3/4"	1.460"	37.08	2.960"	75.18	0.750"	19.05	0.500"	12.70	0.420"	10.66	0.270"	6.85	2.500"	63.50
DMI RCRSC	2"x1"	1.770"	44.95	2.960"	75.18	0.750"	19.05	0.580"	14.73	0.420"	10.66	0.300"	7.62	2.500"	63.50
DMI RCRSC	2"x1-1/4"	2.150"	54.61	2.960"	75.18	0.750"	19.05	0.670"	17.01	0.420"	10.66	0.340"	8.63	2.500"	63.50
DMI RCRSC</															

**Reducción Concéntrica y Excéntrica REDCONSOL REDEXCSOL**  
 Tipo 304 / 316L

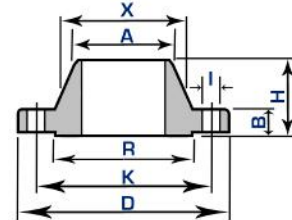
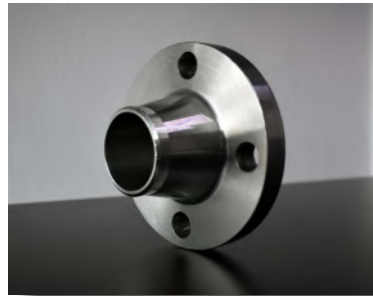
TAMAÑO NOMINAL	DE1		DE2		Cedula 10		E1		E2	
	inche	mm	inche	mm	inche	mm	inche	mm	inche	mm
3/4"x3/8"	1.050"	26.67	0.675"	17.14	0.884"	22.45	0.545"	13.84	0.083"	2.10
3/4"x1/2"	1.050"	26.67	0.840"	21.33	0.884"	22.45	0.674"	17.11	0.083"	2.10
1"x3/8"	1.315"	33.40	0.675"	17.14	1.097"	27.86	0.545"	13.84	0.109"	2.76
1"x1/2"	1.315"	33.40	0.840"	21.33	1.097"	27.86	0.674"	17.11	0.109"	2.76
1"x3/4"	1.315"	33.40	1.050"	26.67	1.097"	27.86	0.884"	22.45	0.109"	2.76
1-1/4"x1/2"	1.660"	42.16	0.840"	21.33	1.442"	36.62	0.674"	17.11	0.109"	2.76
1-1/4"x3/4"	1.660"	42.16	1.050"	26.67	1.442"	36.62	0.884"	22.45	0.109"	2.76
1-1/4"x1"	1.660"	42.16	1.315"	33.40	1.442"	36.62	1.097"	27.86	0.109"	2.76
1-1/2"x1/2"	1.900"	48.26	0.840"	21.33	1.682"	42.72	0.674"	17.11	0.109"	2.76
1-1/2"x3/4"	1.900"	48.26	1.050"	26.67	1.682"	42.72	0.884"	22.45	0.109"	2.76
1-1/2"x1"	1.900"	48.26	1.315"	33.40	1.682"	42.72	1.097"	27.86	0.109"	2.76
1-1/2"x1-1/4"	1.900"	48.26	1.660"	42.16	1.682"	42.72	1.442"	36.62	0.109"	2.76
2"x3/4"	2.375"	60.32	1.050"	26.67	2.157"	54.78	0.884"	22.45	0.109"	2.76
2"x1"	2.375"	60.32	1.315"	33.40	2.157"	54.78	1.097"	27.86	0.109"	2.76
2"x1-1/4"	2.375"	60.32	1.660"	42.16	2.157"	54.78	1.442"	36.62	0.109"	2.76
2"x1-1/2"	2.375"	60.32	1.900"	48.26	2.157"	54.78	1.682"	42.72	0.109"	2.76
2-1/2"x1"	2.875"	73.02	1.315"	33.40	2.635"	66.92	1.097"	27.86	0.120"	3.04
2-1/2"x1-1/4"	2.875"	73.02	1.660"	42.16	2.635"	66.92	1.442"	36.62	0.120"	3.04
2-1/2"x1-1/2"	2.875"	73.02	1.900"	48.26	2.635"	66.92	1.682"	42.72	0.120"	3.04
2-1/2"x2"	2.875"	73.02	2.375"	60.32	2.635"	66.92	2.157"	54.78	0.120"	3.04
3"x1"	3.500"	88.90	1.315"	33.40	3.260"	82.80	1.097"	27.86	0.120"	3.04
3"x1-1/4"	3.500"	88.90	1.660"	42.16	3.260"	82.80	1.442"	36.62	0.120"	3.04
3"x1-1/2"	3.500"	88.90	1.900"	48.26	3.260"	82.80	1.682"	42.72	0.120"	3.04
3"x2"	3.500"	88.90	2.375"	60.32	3.260"	82.80	2.157"	54.78	0.120"	3.04
3"x2-1/2"	3.500"	88.90	2.875"	73.02	3.260"	82.80	2.635"	66.92	0.120"	3.04
3-1/2"x1-1/4"	4.000"	101.60	1.660"	42.16	3.760"	95.50	1.442"	36.62	0.120"	3.04
3-1/2"x1-1/2"	4.000"	101.60	1.900"	48.26	3.760"	95.50	1.682"	42.72	0.120"	3.04
3-1/2"x2"	4.000"	101.60	2.375"	60.32	3.760"	95.50	2.157"	54.78	0.120"	3.04
3-1/2"x2-1/2"	4.000"	101.60	2.875"	73.02	3.760"	95.50	2.635"	66.92	0.120"	3.04
3-1/2"x3"	4.000"	101.60	3.500"	88.90	3.760"	95.50	3.260"	82.80	0.120"	3.04
4"x1-1/2"	4.500"	114.30	1.900"	48.26	4.260"	108.20	1.682"	42.72	0.120"	3.04
4"x2"	4.500"	114.30	2.375"	60.32	4.260"	108.20	2.157"	54.78	0.120"	3.04
4"x2-1/2"	4.500"	114.30	2.875"	73.02	4.260"	108.20	2.635"	66.92	0.120"	3.04
4"x3"	4.500"	114.30	3.500"	88.90	4.260"	108.20	3.260"	82.80	0.120"	3.04
4"x3-1/2"	4.500"	114.30	4.000"	101.60	4.260"	108.20	3.760"	95.50	0.120"	3.04
5"x2"	5.563"	141.30	2.375"	60.32	5.295"	134.49	2.157"	54.78	0.134"	3.40
5"x2-1/2"	5.563"	141.30	2.875"	73.02	5.295"	134.49	2.635"	66.92	0.134"	3.40
5"x3"	5.563"	141.30	3.500"	88.90	5.295"	134.49	3.260"	82.80	0.134"	3.40
5"x3-1/2"	5.563"	141.30	4.000"	101.60	5.295"	134.49	3.760"	95.50	0.134"	3.40
5"x4"	5.563"	141.30	4.500"	114.30	5.295"	134.49	4.260"	108.20	0.134"	3.40
6"x2-1/2"	6.625"	168.27	2.785"	73.02	6.357"	161.46	2.635"	66.92	0.134"	3.40
6"x3"	6.625"	168.27	3.500"	88.90	6.357"	161.46	3.260"	82.80	0.134"	3.40
6"x3-1/2"	6.625"	168.27	4.000"	101.60	6.357"	161.46	3.760"	95.50	0.134"	3.40
6"x4"	6.625"	168.27	4.500"	114.30	6.357"	161.46	4.260"	108.20	0.134"	3.40
6"x5"	6.625"	168.27	5.563"	141.30	6.357"	161.46	5.295"	134.49	0.134"	3.40
8"x2-1/2"	8.625"	219.07	2.785"	73.02	8.389"	213.08	2.635"	66.92	0.148"	3.75
8"x3"	8.625"	219.07	3.500"	88.90	8.389"	213.08	3.260"	82.80	0.148"	3.75
8"x3-1/2"	8.625"	219.07	4.000"	101.60	8.389"	213.08	3.760"	95.50	0.148"	3.75
8"x4"	8.625"	219.07	4.500"	114.30	8.389"	213.08	4.260"	108.20	0.148"	3.75
8"x5"	8.625"	219.07	5.563"	141.30	8.389"	213.08	5.295"	134.49	0.148"	3.75
8"x6"	8.625"	219.07	6.625"	168.27	8.389"	213.08	6.357"	161.46	0.148"	3.75
10"x4"	10.750"	273.05	4.500"	114.30	10.420"	264.66	4.260"	108.20	0.165"	4.19
10"x5"	10.750"	273.05	5.563"	141.30	10.420"	264.66	5.295"	134.49	0.165"	4.19
10"x6"	10.750"	273.05	6.625"	168.27	10.420"	264.66	6.357"	161.46	0.165"	4.19
10"x8"	10.750"	273.05	8.625"	219.07	10.420"	264.66	8.329"	211.55	0.165"	4.19
12"x5"	12.750"	323.85	5.563"	141.30	12.390"	314.70	5.295"	134.49	0.180"	4.57
12"x6"	12.750"	323.85	6.625"	168.27	12.390"	314.70	6.357"	161.46	0.180"	4.57
12"x8"	12.750"	323.85	8.625"	219.07	12.390"	314.70	8.329"	211.55	0.180"	4.57
12"x10"	12.750"	323.85	10.750"	273.05	12.390"	314.70	10.420"	264.66	0.180"	4.57
14"x6"	14.000"	355.60	6.625"	168.27	13.624"	346.04	6.357"	161.46	0.188"	4.77
14"x8"	14.000"	355.60	8.625"	219.07	13.624"	346.04	8.329"	211.55	0.188"	4.77
14"x10"	14.000"	355.60	10.750"	273.05	13.624"	346.04	10.420"	264.66	0.188"	4.77
14"x12"	14.000"	355.60	12.750"	323.85	13.624"	346.04	12.390"	314.70	0.188"	4.77
16"x8"	16.000"	406.40	10.750"	273.05	15.624"	396.84	8.329"	211.55	0.188"	4.77
16"x10"	16.000"	406.40	12.750"	323.85	15.624"	396.84	10.420"	264.66	0.188"	4.77
16"x12"	16.000"	406.40	14.000"	355.60	15.624"	396.84	12.390"	314.70	0.188"	4.77
16"x14"	16.000"	406.40	16.000"	406.40	15.624"	396.84	14.000"	355.60	0.188"	4.77
18"x10"	18.000"	457.20	10.750"	273.05	17.624"	447.64	10.420"	264.66	0.188"	4.77
18"x12"	18.000"	457.20	12.750"	323.85	17.624"	447.64	12.390"	314.70	0.188"	4.77
18"x14"	18.000"	457.20	14.000"	355.60	17.624"	447.64	14.000"	355.60	0.188"	4.77
18"x16"	18.000"	457.20	16.000"	406.40	17.624"	447.64	16.000"	406.40	0.188"	4.77
20"x12"	20.000"	508.00	12.750"	323.85	19.564"	496.92	12.390"	314.70	0.218"	5.53
20"x14"	20.000"	508.00	14.000"	355.60	19.564"	496.92	14.000"	355.60	0.218"	5.53
20"x16"	20.000"	508.00	16.000"	406.40	19.564"	496.92	16.000"	406.40	0.218"	5.53
20"x18"	20.000"	508.00	18.000"	457.20	19.564"	496.92	18.000"	457.20	0.218"	5.53
24"x16"	24.000"	609.60	16.000"	406.40	23.500"	589.85	16.000"	406.40	0.250"	6.35
24"x18"	24.000"	609.60	18.000"	457.20	23.500"	589.85	18.000"	457.20	0.250"	6.35
24"x20"	24.000"	609.60	20.000"	508.00	23.500"	589.85	20.000"	508.00	0.250"	6.35



TAMAÑO NOMINAL	DE1		DE2		Cedula 40		E1		E2	
	inche	mm	inche	mm	inche	mm	inche	mm	inche	mm
3/4"x3/8"	1.050"	26.67	0.675"	17.14	0.884"	22.45	0.493"	12.52	0.113"	2.87
3/4"x1/2"	1.050"	26.67	0.840"	21.33	0.884"	22.45	0.622"	15.79	0.113"	2.87
1"x3/8"	1.315"	33.40	0.675"	17.14	1.049"	26.64	0.493"	12.52	0.133"	3.37
1"x1/2"	1.315"	33.40	0.840"	21.33	1.049"	26.64	0.622"	15.79	0.133"	3.37
1"x3/4"	1.315"	33.40	1.050"	26.67	1.049"	26.64	0.824"	20.92	0.133"	3.37
1-1/4"x1/2"	1.660"	42.16	0.840"	21.33	1.380"	35.05	0.622"	15.79	0.140"	3.55
1-1/4"x3/4"	1.660"	42.16	1.050"	26.67	1.380"	35.05	0.824"	20.98	0.140"	3.55
1-1/4"x1"	1.660"	42.16	1.315"	33.40	1.380"	35.05	1.049"	26.64	0.140"	3.55
1-1/2"x1/2"	1.900"	48.26	0.840"	21.33	1.610"	40.89	0.622"	15.79	0.145"	3.68
1-1/2"x3/4"	1.900"	48.26	1.050"	26.67	1.610"	40.89	0.824"	20.98	0.145"	3.68
1-1/2"x1"	1.900"	48.26	1.315"	33.40	1.610"	40.89	1.049"	26.64	0.145"	3.68
1-1/2"x1-1/4"	1.900"	48.26	1.660"	42.16	1.610"	40.89	1.380"	35.05	0.145"	3.68
2"x3/4"	2.375"	60.32	1.050"	26.67	2.067"	52.50	0.824"	20.98	0.154"	3.91
2"x1"	2.375"	60.32	1.315"	33.40	2.067"	52.50	1.049"	26.64	0.154"	3.91
2"x1-1/4"	2.375"	60.32	1.660"	42.16	2.067"	52.50	1.380"	35.05	0.154"	3.91
2"x1-1/2"	2.375"	60.32	1.900"	48.26	2.067"	52.50	1.610"	40.89	0.154"	3.91
2-1/2"x1"	2.875"	73.02	1.315"	33.40	2.469"	62.71	1.049"	26.64	0.203"	5.15
2-1/2"x1-1/4"	2.875"	73.02	1.660"	42.16	2.469"	62.71	1.380"	35.05	0.203"	5.15
2-1/2"x1-1/2"	2.875"	73.02	1.900"	48.26	2.469"	62.71	1.610"	40.89	0.203"	5.15
2-1/2"x2"	2.875"	73.02	2.375"	60.32	2.469"	62.71	2.067"	52.50	0.203"	5.15
3"x1"	3.500"	88.90	1.315"	33.40	3					

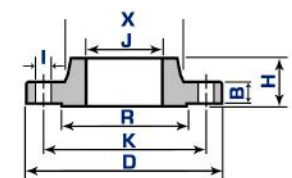
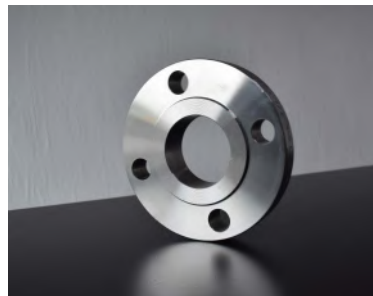
**Brida Welding - Neck**  
Tipo 304 / 316L **BRIDAWNRF**

CLAVE	TAMAÑO NOMINAL	BRIDA						CUELLO		RESALTE R	NUMERO	TALADROS		PESO KG					
		inche D	mm D	inche B	mm B	inche H	mm H	inche A	mm A			inche I	mm I		inche K	mm K			
DMI BRIDAWNRF	1/2"	3.500"	88.9	0.437"	11.1	1.874"	47.6	0.840"	21.34	1.188"	30.2	1.374"	34.9	4	0.620"	15.75	2.374"	60.3	0.90
DMI BRIDAWNRF	3/4"	3.875"	98.4	0.500"	12.7	2.062"	52.4	1.050"	26.67	1.500"	38.1	1.688"	42.9	4	0.620"	15.75	2.748"	69.8	0.90
DMI BRIDAWNRF	1"	4.250"	107.9	0.562"	14.3	2.188"	55.6	1.314"	33.40	1.937"	49.2	2.000"	50.8	4	0.620"	15.75	3.125"	79.4	1.40
DMI BRIDAWNRF	1-1/4"	4.625"	117.5	0.625"	15.9	2.248"	57.1	1.659"	42.16	2.311"	58.7	2.500"	63.5	4	0.620"	15.75	3.500"	88.9	1.40
DMI BRIDAWNRF	1-1/2"	5.000"	127.0	0.688"	17.5	2.437"	61.9	1.663"	48.26	2.562"	65.1	2.874"	73.0	4	0.620"	15.75	3.874"	98.4	1.80
DMI BRIDAWNRF	2"	6.000"	152.4	0.751"	19.1	2.500"	63.5	2.375"	60.33	3.062"	77.8	3.625"	92.1	4	0.750"	19.05	4.748"	120.6	2.70
DMI BRIDAWNRF	2-1/2"	7.000"	177.8	0.874"	22.2	2.748"	69.8	2.875"	73.03	3.562"	90.5	4.125"	104.8	4	0.750"	19.05	5.500"	139.7	3.60
DMI BRIDAWNRF	3"	7.500"	190.5	0.937"	23.8	2.748"	69.8	3.500"	88.90	4.248"	107.9	5.000"	127.0	4	0.750"	19.05	6.000"	152.4	4.50
DMI BRIDAWNRF	3-1/2"	8.500"	215.9	0.937"	23.8	2.856"	71.4	4.000"	101.60	4.811"	122.2	5.500"	139.7	8	0.750"	19.05	7.000"	177.8	5.40
DMI BRIDAWNRF	4"	9.000"	228.6	0.937"	23.8	3.000"	76.2	4.500"	114.30	5.311"	134.9	6.188"	157.2	8	0.750"	19.05	7.500"	190.5	6.80
DMI BRIDAWNRF	5"	10.000"	254.0	0.937"	23.8	3.500"	88.9	5.562"	141.30	6.437"	163.5	7.311"	185.7	8	0.879"	22.35	8.500"	215.9	8.60
DMI BRIDAWNRF	6"	11.000"	279.4	1.000"	25.4	3.500"	88.9	6.625"	168.28	7.562"	192.1	8.500"	215.9	8	0.879"	22.35	8.500"	215.9	10.90
DMI BRIDAWNRF	8"	13.500"	342.9	1.125"	28.6	4.000"	101.6	8.625"	219.08	9.688"	246.1	10.625"	269.9	8	0.879"	22.35	11.748"	298.4	17.70
DMI BRIDAWNRF	10"	16.000"	406.4	1.188"	30.2	4.000"	101.6	10.750"	273.05	12.000"	304.8	12.748"	323.8	12	1.000"	25.40	12.476"	361.9	23.60
DMI BRIDAWNRF	12"	19.000"	482.6	1.251"	31.8	4.500"	114.3	12.750"	323.85	14.374"	365.1	15.000"	381.0	12	1.000"	25.40	17.000"	431.8	36.30
DMI BRIDAWNRF	14"	21.000"	533.4	1.374"	34.9	5.000"	127.0	14.000"	355.60	15.748"	400.0	16.248"	412.7	12	1.120"	28.45	18.748"	476.2	50.00
DMI BRIDAWNRF	16"	23.500"	596.9	1.437"	36.5	5.000"	127.0	16.000"	406.40	18.000"	457.2	18.500"	469.9	16	1.120"	28.45	21.248"	539.7	64.00
DMI BRIDAWNRF	18"	25.000"	635.0	1.562"	39.7	5.500"	139.7	18.000"	457.20	19.874"	504.8	21.000"	533.4	16	1.250"	31.75	22.748"	577.8	68.00
DMI BRIDAWNRF	20"	27.500"	698.5	1.688"	42.9	5.770"	144.3	20.000"	508.00	22.000"	558.8	23.000"	584.2	20	1.250"	31.75	25.000"	635.0	81.60
DMI BRIDAWNRF	24"	32.000"	812.8	1.874"	47.6	6.000"	152.4	24.000"	609.60	26.125"	663.6	26.125"	692.1	20	1.379"	35.05	29.500"	749.3	118.00



**Brida Slip - On**  
Tipo 304 **BRIDASORF**

CLAVE	TAMAÑO NOMINAL	BRIDA						CUELLO		RESALTE R	NUMERO	TALADROS		PESO KG					
		inche D	mm D	inche J	mm J	inche B	mm B	inche H	mm H			inche X	mm X		inche I	mm I	inche K	mm K	
DMI BRIDASORF	1/2"	3.500"	88.9	0.877"	22.3	0.437"	11.1	0.625"	15.9	1.188"	30.2	1.374"	34.9	4	0.620"	15.75	2.374"	60.3	0.50
DMI BRIDASORF	3/4"	3.875"	98.4	1.090"	27.7	0.500"	12.7	0.625"	15.9	1.500"	38.1	1.688"	42.9	4	0.620"	15.75	2.748"	69.8	0.90
DMI BRIDASORF	1"	4.250"	107.9	1.358"	34.5	0.562"	14.3	0.688"	17.5	1.937"	49.2	2.000"	50.8	4	0.620"	15.75	3.125"	79.4	0.90
DMI BRIDASORF	1-1/4"	4.625"	117.5	1.700"	43.2	0.625"	15.9	0.811"	20.6	2.311"	58.7	2.500"	63.5	4	0.620"	15.75	3.500"	88.9	1.40
DMI BRIDASORF	1-1/2"	5.000"	127.0	1.948"	49.5	0.688"	17.5	0.874"	22.2	2.562"	65.1	2.874"	73.0	4	0.620"	15.75	3.874"	98.4	1.40
DMI BRIDASORF	2"	6.000"	152.4	2.440"	62.0	0.751"	19.1	1.000"	25.4	3.062"	77.8	3.625"	92.1	4	0.750"	19.05	4.748"	120.6	2.30
DMI BRIDASORF	2-1/2"	7.000"	177.8	2.940"	74.7	0.874"	22.2	1.125"	28.6	3.562"	90.5	4.125"	104.8	4	0.750"	19.05	5.500"	139.7	3.20
DMI BRIDASORF	3"	7.500"	190.5	3.570"	90.7	0.937"	23.8	1.188"	30.2	2.248"	107.9	5.000"	127.0	4	0.750"	19.05	6.000"	152.4	3.60
DMI BRIDASORF	3-1/2"	8.500"	215.9	4.070"	103.4	0.937"	23.8	1.248"	31.7	4.811"	122.2	5.500"	139.7	8	0.750"	19.05	7.000"	177.8	5.00
DMI BRIDASORF	4"	9.000"	228.6	4.570"	116.1	0.937"	23.8	1.311"	33.3	5.311"	134.9	6.188"	157.2	8	0.750"	19.05	7.500"	190.5	5.90
DMI BRIDASORF	5"	10.000"	254.0	5.661"	143.8	0.937"	23.8	1.437"	36.5	6.437"	163.5	7.311"	185.7	8	0.879"	22.35	8.500"	215.9	6.80
DMI BRIDASORF	6"	11.000"	279.4	6.720"	170.7	1.000"	25.4	1.562"	39.7	7.562"	192.1	8.500"	215.9	8	0.879"	22.35	8.500"	215.9	8.60
DMI BRIDASORF	8"	13.500"	342.9	8.720"	221.5	1.125"	28.6	1.748"	44.4	9.688"	246.1	10.625"	269.9	8	0.879"	22.35	11.748"	298.4	13.60
DMI BRIDASORF	10"	16.000"	406.4	10.877"	276.3	1.188"	30.2	1.937"	49.2	12.000"	304.8	12.748"	323.8	12	1.000"	25.40	12.476"	361.9	19.50
DMI BRIDASORF	12"	19.000"	482.6	12.877"	327.1	1.251"	31.8	2.188"	55.6	14.374"	365.1	15.000"	381.0	12	1.120"	28.45	18.748"	476.2	41.00
DMI BRIDASORF	14"	21.000"	533.4	14.137"	359.1	1.374"	34.9	2.248"	57.1	15.748"	400.0	16.248"	412.7	12	1.120"	28.45	21.248"	539.7	44.50
DMI BRIDASORF	16"	23.500"	596.9	16.161"	410.5	1.437"	36.5	2.500"	63.5	18.000"	457.2	18.500"	469.9	16	1.120"	28.45	21.248"	539.7	44.50
DMI BRIDASORF	18"	25.000"	635.0	18.181"	461.8	1.562"	39.7	2.688"	68.3	19.874"	504.8	21.000"	533.4	16	1.250"	31.75	22.748"	577.8	59.00
DMI BRIDASORF	20"	27.500"	698.5	20.200"	513.1	1.688"	42.9	2.874"	73.0	22.000"	558.8	23.000"	584.2	20	1.250"	31.75	25.000"	635.0	75.00
DMI BRIDASORF	24"	32.000"	812.8	25.240"	615.95	1.874"	47.6	3.248"	82.5	26.125"	663.6	26.125"	692.1	20	1.379"	35.05	29.500"	749.3	99.80



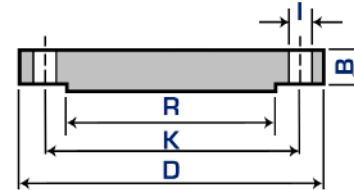
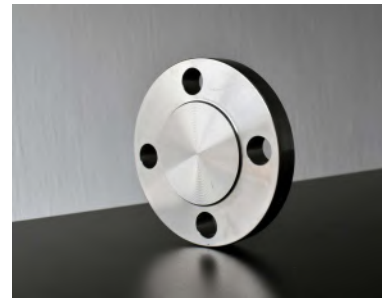
**BRIDALJRF**

**Brida Lap Joint**  
Tipo 304

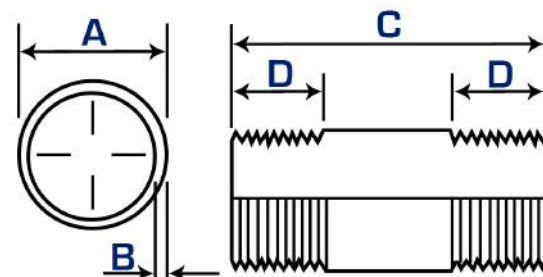
CLAVE	TAMAÑO NOMINAL	BRIDA						CUELLO		NUMERO	TALADROS		PESO KG						
		inche D	mm D	inche J	mm J	inche B	mm B	inche H	mm H		inche X	mm X		inche I	mm I	inche K	mm K		
DMI BRIDALJRF	1/2"	3.500"	88.9	0.901"	22.9	0.437"	11.1	0.625"	15.9	0.125"	3.2	1.188"	30.2	4	0.620"	15.75	2.374"	60.3	0.50
DMI BRIDALJRF	3/4"	3.875"	98.4	1.110"	28.2	0.500"	12.7	0.625"	15.9	0.125"	3.2	1.500"	38.1	4	0.620"	15.75	2.748"	69.8	0.90
DMI BRIDALJRF	1"	4.250"	107.9	1.377"	35.0	0.562"	14.3	0.688"	17.5	0.125"	3.2	1.937"	49.2	4	0.620"	15.75	3.125"	79.4	0.90
DMI BRIDALJRF	1-1/4"	4.625"	117.5	1.720"	43.7	0.625"	15.9	0.811"	20.6	0.188"	4.8	2.311"	58.7	4	0.620"	15.75	3.500"	88.9	1.40
DMI BRIDALJRF	1-1/2"	5.000"	127.0	1.968"	50.0	0.688"	17.5	0.874"	22.2	0.248"	6.3	2.562"	65.1	4	0.620"	15.75	3.874"	98.4	1.40
DMI BRIDALJRF	2"	6.000"	152.4	2.460"	62.5	0.751"	19.1	0.960"	24.4	0.311"	7.9	3.062"	77.8	4	0.750"	19.05	4.748"	120.6	2.30
DMI BRIDALJRF	2-1/2"	7.000"	177.8	2.968"	75.4	0.874"	22.2	1.125"	28.6	0.311"	7.9	3.562"	90.5	4	0.750"	19.05	5.500"	139.7	3.20
DMI BRIDALJRF	3"	7.500"	190.5	3.598"	91.4	0.937"	23.8	1.188"	30.2	0.374"	9.5	4.248"	107.9	4	0.750"	19.05	6.000"	152.4	3.60
DMI BRIDALJRF	3-1/2"	8.500"	215.9	4.098"	104.1	0.937"	23.8	1.248"	31.7	0.374"	9.5	4.811"	122.2	8	0.750"	19.05	7.000"	177.8	5.00
DMI BRIDALJRF	4"	9.000"	228.6	4.598"	116.8	0.937"	23.8	1.311"	33.3	0.437"	11.1	5.311"	134.9	8	0.750"	19.05	7.500"	190.5	5.90
DMI BRIDALJRF	5"	10.000"	254.0	5.688"	144.5	0.937"	23.8	1.437"	36.5	0.437"	11.1	6.437"	163.5	8	0.879"	22.35	8.500"	215.9	6.80
DMI BRIDALJRF	6"	11.000"	279.4	6.748"	171.4	1.000"	25.4	1.562"	39.7	0.500"	12.7	7.562"	192.1	8	0.879"	22.35	8.500"	215.9	8.60
DMI BRIDALJRF	8"	13.500"	342.9	8.748"	222.2	1.125"	28.6	1.748"	44.4	0.500"	12.7	9.688"	246.1	8	0.879"	22.35	11.748"	298.4	13.60
DMI BRIDALJRF	10"	16.000"	406.4	10.921"	277.4	1.188"	30.2	1.937"	49.2	0.500"	12.7	12.000"	304.8	12	1.000"	25.40	12.476"	361.9	19.50
DMI BRIDALJRF	12"	19.000"	482.6	12.921"	328.2	1.251"	31.8	2.188"	55.6	0.500"	12.7	14.374"	365.1	12	1.000"	25.40	17.000"	431.8	29.00
DMI BRIDALJRF	14"	21.000"	533.4	14.181"	360.2	1.374"	34.9	3.125"	79.4	0.500"	12.7	15.748"	400.0	12	1.120"	28.45	18.748"	476.2	47.60

**Brida Ciega**  
Tipo 304 **BRIDACIEGARF**

CLAVE	TAMAÑO NOMINAL	BRIDA				RESALTE		TALADROS				PESO KG	
		inche	D mm	inche	B mm	inche	R mm	NÚMERO	inche	I mm	inche		K mm
DMI BRIDACIEGARF	1/2"	3.500"	88.9	0.437"	11.1	1.374"	34.9	4	0.620"	15.75	2.374"	60.3	0.50
DMI BRIDACIEGARF	3/4"	3.875"	98.4	0.500"	12.7	1.688"	42.9	4	0.620"	15.75	2.748"	69.8	0.90
DMI BRIDACIEGARF	1"	4.250"	107.9	0.562"	14.3	2.000"	50.8	4	0.620"	15.75	3.125"	79.4	0.90
DMI BRIDACIEGARF	1-1/4"	4.625"	117.5	0.625"	15.9	2.500"	63.5	4	0.620"	15.75	3.500"	88.9	1.40
DMI BRIDACIEGARF	1-1/2"	5.000"	127.0	0.688"	17.5	2.874"	73.0	4	0.620"	15.75	3.874"	98.4	1.80
DMI BRIDACIEGARF	2"	6.000"	152.4	0.751"	19.1	3.625"	92.1	4	0.750"	19.05	4.748"	120.6	2.30
DMI BRIDACIEGARF	2-1/2"	7.000"	177.8	0.874"	22.2	4.125"	104.8	4	0.750"	19.05	5.500"	139.7	3.20
DMI BRIDACIEGARF	3"	7.500"	190.5	0.937"	23.8	5.000"	127.0	4	0.750"	19.05	6.000"	152.4	4.10
DMI BRIDACIEGARF	3-1/2"	8.500"	215.9	0.937"	23.8	5.500"	139.7	8	0.750"	19.05	7.000"	177.8	5.90
DMI BRIDACIEGARF	4"	9.000"	228.6	0.937"	23.8	6.188"	157.2	8	0.750"	19.05	7.500"	190.5	7.70
DMI BRIDACIEGARF	5"	10.000"	254.0	0.937"	23.8	7.311"	185.7	8	0.879"	22.35	8.500"	215.9	9.10
DMI BRIDACIEGARF	6"	11.000"	279.4	1.000"	25.4	8.500"	215.9	8	0.879"	22.35	8.500"	241.3	11.80
DMI BRIDACIEGARF	8"	13.500"	342.9	1.125"	28.6	10.625"	269.9	8	0.879"	22.35	11.748"	298.4	21.00
DMI BRIDACIEGARF	10"	16.000"	406.4	1.188"	30.2	12.748"	323.8	12	1.000"	25.40	12.476"	361.9	31.80
DMI BRIDACIEGARF	12"	19.000"	482.6	1.251"	31.8	15.000"	381.0	12	1.000"	25.40	17.000"	431.8	49.90
DMI BRIDACIEGARF	14"	21.000"	533.4	1.374"	34.9	16.248"	412.7	12	1.120"	28.45	18.748"	476.2	63.50
DMI BRIDACIEGARF	16"	23.500"	596.9	1.437"	36.5	18.500"	469.9	16	1.120"	28.45	21.248"	539.7	81.60
DMI BRIDACIEGARF	18"	25.000"	635.0	1.562"	39.7	21.000"	533.4	16	1.250"	31.75	22.748"	577.8	99.80
DMI BRIDACIEGARF	20"	27.500"	698.5	1.688"	42.9	23.000"	584.2	20	1.250"	31.75	25.000"	635.0	129.00
DMI BRIDACIEGARF	24"	32.000"	812.8	1.885"	47.9	26.125"	692.1	20	1.379"	35.05	29.500"	749.3	195.00



**NIPLE**  
Tipo 304 / 316L **NIPLE304**



**NORMA ANSI B1.20.1 ROSCADO**

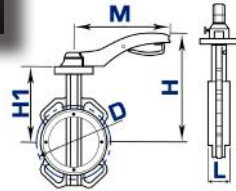
TAMAÑO NOMINAL	PASO (HILOS POR PULGADA)	No. HILOS (D)			GAGES HILOS
		MIN.	NOM.	MAX.	
1/8"	27	9.6	10.6	11.6	0.100"
1/4"	18	9.7	10.7	11.7	0.120"
3/8"	18	9.8	10.8	11.8	0.130"
1/2"	14	9.9	10.9	11.9	0.150"
3/4"	14	10.1	11.1	12.1	0.150"
1"	11.5	10.3	11.3	12.3	0.180"
1-1/4"	11.5	10.6	11.6	12.6	0.190"
1-1/2"	11.5	10.8	11.8	12.8	0.200"
2"	11.5	11.2	12.2	13.2	0.220"
2-1/2"	8	11.6	12.6	13.6	0.280"
3"	8	12.1	13.1	14.1	0.300"
4"	8	12.9	13.9	14.9	0.340"

**NORMA ASTM A53 TUBO CEDULA 40**

CLAVE	TAMAÑO NOMINAL	A		B			
		inche	mm	inche	mm	inche	mm
DMI NIPLE	1/8"	0.410"	10.4	0.070"	1.77	0.100"	2.54
DMI NIPLE	1/4"	0.540"	13.7	0.090"	2.28	0.120"	3.04
DMI NIPLE	3/8"	0.680"	17.2	0.090"	2.28	0.130"	3.30
DMI NIPLE	1/2"	0.840"	21.3	0.110"	2.79	0.150"	3.81
DMI NIPLE	3/4"	1.050"	26.6	0.110"	2.79	0.150"	3.81
DMI NIPLE	1"	1.320"	33.5	0.130"	3.30	0.180"	4.57
DMI NIPLE	1-1/4"	1.660"	42.1	0.140"	3.55	0.190"	4.82
DMI NIPLE	1-1/2"	1.900"	48.2	0.150"	3.81	0.200"	5.08
DMI NIPLE	2"	2.380"	60.4	0.150"	3.81	0.220"	5.58
DMI NIPLE	2-1/2"	2.880"	73.1	0.200"	5.08	0.280"	7.11
DMI NIPLE	3"	3.500"	88.9	0.220"	5.58	0.300"	7.62
DMI NIPLE	4"	4.500"	114.3	0.240"	6.09	0.340"	8.63

**Válvula Mariposa Tipo Wafer  
Tipo 304**

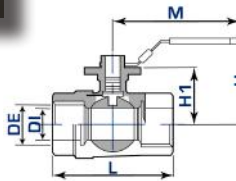
**VMINOXFE**



CLAVE	TAMAÑO NOMINAL	DN	L	H	H1	D			M
						PN10	PN16	ANSI150	
DMI VMINOXF3	2"	50	43	225.5	140.5	125	125	120.6	215
DMI VMINOXF3	2-1/2"	65	46	238	153	145	145	139.7	215
DMI VMINOXF3	3"	80	46	242.5	157.5	160	160	152.4	215
DMI VMINOXF3	4"	100	52	261	176	180	180	190.5	215
DMI VMINOXF3	5"	125	56	276	191	210	210	215.9	215
DMI VMINOXF3	6"	150	56	287.5	202.5	240	240	241.3	215
DMI VMINOXF3	8"	200	60	338.5	243.5	295	295	298.4	355
DMI VMINOXF3	10"	250	68	368	273	350	355	361.9	355
DMI VMINOXF3	12"	300	78	406	311	400	410	431.8	355

**Válvula Bola Roscada Paso Completo  
Tipo 304 / 316L**

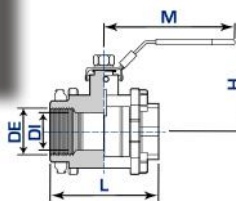
**VBRSC**



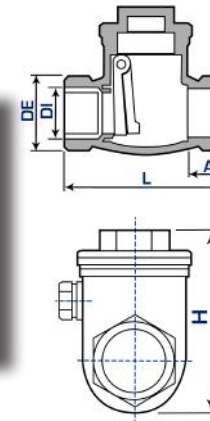
CLAVE	TAMAÑO NOMINAL	DN	L	H	H1	M
DMI VBRSC	1/4"	11.6	50	51.5	36.5	91
DMI VBRSC	3/8"	12.5	50	51.5	36.5	91
DMI VBRSC	1/2"	15	58	53	37.8	100
DMI VBRSC	3/4"	20	65	58	42.5	113
DMI VBRSC	1"	25	80	60	45	113
DMI VBRSC	1-1/4"	32	92	66.5	51.5	143
DMI VBRSC	1-1/2"	38	105	74.5	59.5	143
DMI VBRSC	2"	50	125	83.5	68.5	165

**Válvula Bola Roscada (3 Pzs)  
Tipo 304 / 316L**

**VBRSC3P**



CLAVE	TAMAÑO NOMINAL	DN	L	H	M
DMI VBRSC3P	1/4"	11.6	61	49	103
DMI VBRSC3P	3/8"	12.5	61	49	103
DMI VBRSC3P	1/2"	15	63	57	108
DMI VBRSC3P	3/4"	20	72	62	108
DMI VBRSC3P	1"	25	82.5	72	129
DMI VBRSC3P	1-1/4"	32	97.5	78	129
DMI VBRSC3P	1-1/2"	38	108.5	91	160
DMI VBRSC3P	2"	50	124	102	160
DMI VBRSC3P	2-1/2"	65	162	122	230
DMI VBRSC3P	3"	76	175	132	230
DMI VBRSC3P	4"	100	216	177	335



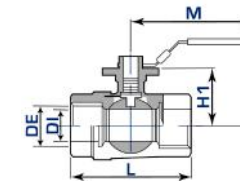
**VCHRSC**

**Válvula Check Roscada  
Tipo 304 / 316L**

CLAVE	TAMAÑO NOMINAL	DE		DI		L		H		A	
		inche	mm	inche	mm	inche	mm	inche	mm	inche	mm
DMI VCHRSC	1/2"	1.06"	26.8	0.850"	21.7	2.600"	66.0	1.810"	46.0	0.390"	10.0
DMI VCHRSC	3/4"	1.36"	34.6	1.070"	27.1	3.190"	81.0	2.130"	54.0	0.510"	13.0
DMI VCHRSC	1"	1.56"	39.5	1.330"	33.8	3.580"	91.0	2.360"	60.0	0.510"	13.0
DMI VCHRSC	1-1/4"	1.93"	49.0	1.680"	42.6	4.190"	106.5	2.830"	72.0	0.510"	13.0
DMI VCHRSC	1-1/2"	2.20"	55.8	1.920"	48.7	4.760"	121.0	2.950"	75.0	0.510"	13.0
DMI VCHRSC	2"	2.68"	68.0	2.410"	61.1	5.590"	142.0	3.230"	82.0	0.630"	16.0
DMI VCHRSC	2-1/2"	3.46"	88.0	2.910"	73.8	6.260"	159.0	3.540"	90.0	0.630"	16.0
DMI VCHRSC	3"	4.13"	105.0	3.540"	89.8	7.480"	190.0	4.090"	104.0	0.630"	16.0

**VBRSCAC**

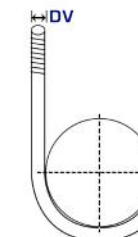
**Válvula Bola Roscada  
Acero al Carbón**



CLAVE	TAMAÑO NOMINAL	DN	L	H	M
DMI VBRSCAC	1/2"	15	63	57	108
DMI VBRSCAC	3/4"	20	72	62	108
DMI VBRSCAC	1"	25	82.5	72	129
DMI VBRSCAC	1-1/4"	32	97.5	78	129
DMI VBRSCAC	1-1/2"	38	108.5	91	160
DMI VBRSCAC	2"	50	124	102	160

**ABRATU**

**Abrazadera Tipo "U"  
Tipo 304**

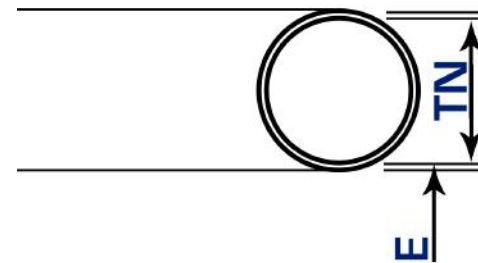


CLAVE	TAMAÑO NOMINAL	Tamaño Nominal	DV	
			inche	mm
DMI ABRATU	1/2"	1/4"	0.250"	6.35
DMI ABRATU	3/4"	1/4"	0.250"	6.35
DMI ABRATU	1"	1/4"	0.250"	6.35
DMI ABRATU	1-1/4"	1/4"	0.250"	6.35
DMI ABRATU	1-1/2"	1/4"	0.250"	6.35
DMI ABRATU	2"	1/4"	0.250"	6.35
DMI ABRATU	2-1/2"	5/16"	0.312"	7.92
DMI ABRATU	3"	5/16"	0.312"	7.92
DMI ABRATU	3-1/2"	5/16"	0.312"	7.92
DMI ABRATU	4"	5/16"	0.312"	7.92
DMI ABRATU	5"	5/16"	0.312"	7.92
DMI ABRATU	6"	5/16"	0.312"	7.92
DMI ABRATU	8"	3/8"	0.375"	9.52
DMI ABRATU	10"	3/8"	0.375"	9.52
DMI ABRATU	12"	3/8"	0.375"	9.52

**Tubería Pipe Con Costura**  
Tipo 304 / 316L **TUBA312**

CLAVE	TAMAÑO NOMINAL	DE		C	ESPESOR DE PARED		PESO APROX.		PRESIÓN INTERIOR		PRESIÓN DE RUTURA		PRESIÓN EXTERIOR		PRESIÓN APLASTAMIENTO	
		inche	mm		inche	mm	Lb/pie	kg/m	(PSI)	kg/cm <sup>2</sup>	(PSI)	kg/cm <sup>2</sup>	(PSI)	kg/cm <sup>2</sup>	(PSI)	kg/cm <sup>2</sup>
DMI TUBA312	1/8"	0.405"	10.29	10	0.049	1.24	0.190	0.283	3550	250	18670	1315	2063	145	8252	580
				40	0.068	1.73	0.250	0.373	5170	365	27200	1915	3195	225	12780	900
				80	0.095	2.41	0.321	0.479	7670	540	43230	3040	5410	381	21640	1524
DMI TUBA312	1/4"	0.540"	13.72	10	0.065	1.65	0.337	0.502	3540	250	19960	1405	2063	145	8252	580
				40	0.088	2.24	0.435	0.648	5000	350	28170	1980	3195	225	12780	900
				80	0.119	3.02	0.547	0.815	7110	500	40070	2820	4096	288	16384	1152
DMI TUBA312	3/8"	0.675"	17.15	10	0.065	1.65	0.433	0.645	2770	195	15630	1100	1453	102	5812	408
				40	0.091	2.31	0.580	0.864	4020	285	22640	1595	2512	177	10048	708
				80	0.126	3.20	0.756	1.126	5830	410	32900	2315	4096	288	16384	1152
DMI TUBA312	1/2"	0.840"	21.34	10	0.083	2.11	0.687	1.023	2860	200	16110	1135	1453	102	5812	408
				40	0.109	2.77	0.871	1.297	3850	270	21730	1530	2063	145	8252	580
				80	0.147	3.73	1.112	1.657	5410	380	30480	2145	3195	225	12780	900
DMI TUBA312	3/4"	1.050"	26.67	10	0.083	2.11	0.687	1.307	2250	160	12670	890	1087	76	4348	304
				40	0.109	2.77	1.121	1.670	3010	210	16990	1195	1453	102	5812	408
				80	0.147	3.73	1.449	2.158	4190	295	23620	1660	2512	177	10048	708
DMI TUBA312	1"	1.315"	33.40	10	0.109	2.77	1.437	2.140	2360	165	13320	935	1189	84	4756	336
				40	0.133	3.38	1.718	2.559	2930	205	16520	1165	1453	102	5812	408
				80	0.179	4.55	2.223	3.311	4070	285	22930	1615	2512	177	10048	708
DMI TUBA312	1-1/4"	1.660"	42.16	10	0.109	2.77	1.848	2.752	1840	130	10400	730	889	63	3556	252
				40	0.140	3.56	2.327	3.466	2410	170	13580	955	1189	84	4756	336
				80	0.191	4.85	3.064	4.564	3370	235	19000	1335	1732	122	6928	488
DMI TUBA312	1-1/2"	1.900"	48.26	10	0.109	2.77	2.134	3.178	1600	115	9020	635	769	54	3076	216
				40	0.145	3.68	2.778	4.138	2160	150	12180	855	1087	76	4348	304
				80	0.200	5.08	3.715	5.533	3060	215	17240	1215	1453	102	5812	408
DMI TUBA312	2"	2.375"	60.33	10	0.109	2.77	2.700	4.022	1270	90	7150	505	533	38	2132	152
				40	0.154	3.91	3.736	5.565	1820	130	10250	720	889	63	3556	252
				80	0.218	5.54	5.140	7.657	2640	185	14870	1045	1309	92	5236	368
DMI TUBA312	2-1/2"	2.875"	73.03	10	0.120	3.05	3.614	5.384	1150	80	6480	455	461	32	1844	128
				40	0.203	5.16	5.931	8.834	1990	140	11230	790	1000	70	4000	280
				80	0.216	5.49	7.755	11.552	1730	120	9740	685	825	58	3300	232
DMI TUBA312	3"	3.500"	88.90	10	0.120	3.05	4.434	6.605	940	65	5290	370	345	24	1380	96
				40	0.216	5.49	7.755	11.552	1730	120	9740	685	825	58	3300	232
				80	0.216	5.49	7.755	11.552	1730	120	9740	685	825	58	3300	232
DMI TUBA312	3-1/2"	4.000"	101.60	10	0.120	3.05	5.090	7.582	820	60	4610	325	283	20	1132	80
				40	0.226	5.74	9.319	13.880	1570	110	8880	625	704	50	2816	200
				80	0.226	5.74	9.319	13.880	1570	110	8880	625	704	50	2816	200

CLAVE	TAMAÑO NOMINAL	DE		C	ESPESOR DE PARED		PESO APROX.		PRESIÓN INTERIOR		PRESIÓN DE RUTURA		PRESIÓN EXTERIOR		PRESIÓN APLASTAMIENTO	
		inche	mm		inche	mm	Lb/pie	kg/m	(PSI)	kg/cm <sup>2</sup>	(PSI)	kg/cm <sup>2</sup>	(PSI)	kg/cm <sup>2</sup>	(PSI)	kg/cm <sup>2</sup>
DMI TUBA312	4"	4.500"	114.30	10	0.120	3.05	5.746	8.559	730	50	4090	290	234	16	936	64
				40	0.237	6.02	11.040	16.444	1460	105	8250	580	639	45	3556	180
DMI TUBA312	5"	5.563"	141.30	10	0.134	3.40	7.940	11.827	650	45	3680	260	190	13	760	52
				40	0.258	6.55	14.948	22.265	1280	90	7220	510	539	38	2156	152
DMI TUBA312	6"	6.625"	168.28	10	0.134	3.40	9.494	14.142	550	40	3080	215	141	10	564	40
				40	0.280	7.11	19.407	28.908	1160	80	6560	460	444	31	1776	124
DMI TUBA312	8"	8.625"	219.08	10	0.148	3.76	19.711	20.423	460	30	2610	185	124	9	496	36
				40	0.322	8.18	29.218	43.520	1020	70	5770	405	395	28	1580	112
DMI TUBA312	10"	10.750"	273.05	10	0.165	4.19	19.079	28.418	410	30	2330	165	71	5	284	20
				40	0.365	9.27	47.413	61.686	930	65	5230	370	345	24	1380	96
DMI TUBA312	12"	12.750"	323.85	10	0.180	4.57	24.712	36.808	380	25	2140	150	54	4	216	16
				40	0.375	9.53	50.707	75.528	800	55	4520	320	275	19	1100	76
DMI TUBA312	14"	14.000"	355.60	10	0.188	4.78	28.371	42.260	360	25	2040	145	59	4	236	16
				40	0.375	9.53	52.829	83.157	730	50	4110	290	234	16	936	64
DMI TUBA312	16"	16.000"	406.40	10	0.188	4.78	32.480	48.379	320	25	1780	125	31	2	124	8
				40	0.375	9.53	64.024	95.363	640	45	3580	250	181	13	724	52
DMI TUBA312	18"	18.012"	457.50	10	0.188	4.78	36.612	54.534	280	20	1580	110	22	2	88	8
				40	0.375	9.53	72.267	107.642	560	40	3180	225	146	10	584	40
DMI TUBA312	20"	20.000"	508.00	10	0.218	5.54	47.119	70.185	290	20	1650	115	19	1	76	4
				40	0.375	9.53	80.414	119.777	510	35	2860	200	126	9	504	36
DMI TUBA312	22"	22.000"	558.90	10	0.218	5.54	51.883	77.280	270	20	1500	105	22	2	88	8
				40	0.375	9.53	88.609	131.983	460	30	2590	180	90	6	360	24
DMI TUBA312	24"	24.000"	609.60	10	0.250	6.35	64.877	96.635	280	20	1580	110	25	2	100	8
				40	0.375	9.53	96.804	144.190	420	30	2370	165	73	5	292	20
DMI TUBA312	30"	30.000"	762.00	10	0.312	7.93	101.213	150.757	280	20	1570	110	20	1	80	4
				40	0.375	9.53	121.389	180.810	340	25	1890	135	44	3	176	12

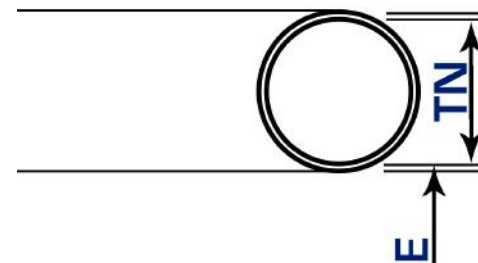


**E: Espesor**  
**TN: Tamaño Nominal**

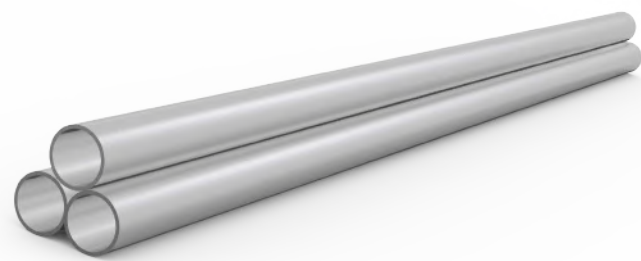


**Tubería Pipe Sin Costura**  
Tipo 304 / 316L **TUBA312SC**

CLAVE	TAMAÑO NOMINAL	DE		C	ESPESOR DE PARED		PESO APROX.		PRESIÓN INTERIOR		PRESIÓN DE RUTURA		PRESIÓN EXTERIOR		PRESIÓN APLASTAMIENTO	
		inche	mm		inche	mm	Lb/pie	kg/m	(PSI)	kg/cm <sup>2</sup>	(PSI)	kg/cm <sup>2</sup>	(PSI)	kg/cm <sup>2</sup>	(PSI)	kg/cm <sup>2</sup>
DMITUBA312SC	1/2"	0.840"	21.34	10	0.083	2.11	0.550	0.819	2860	200	16110	1135	1453	102	5812	408
				40	0.109	2.77	0.687	1.023	3850	270	21730	1530	2063	145	8252	580
				80	0.147	3.73	0.871	1.297	5410	380	30480	2145	3195	225	12780	900
DMITUBA312SC	3/4"	1.050"	26.67	10	0.083	2.11	0.877	1.307	2250	160	12670	890	1087	76	4348	304
				40	0.109	2.77	1.121	1.670	3010	210	16990	1195	1453	102	5812	408
				80	0.147	3.73	1.449	2.158	4190	295	23620	1660	2512	177	10048	708
DMITUBA312SC	1"	1.315"	33.40	10	0.109	2.77	1.437	2.140	2360	165	13320	935	1189	84	4756	336
				40	0.133	3.38	1.718	2.559	2930	205	16520	1165	1453	102	5812	408
				80	0.179	4.55	2.223	3.311	4070	285	22930	1615	2512	177	10048	708
DMITUBA312SC	1-1/2"	1.900"	48.26	10	0.109	2.77	2.134	3.178	1600	115	9020	635	769	54	3076	216
				40	0.145	3.68	2.778	4.138	2160	150	12180	855	1087	76	4348	304
				80	0.200	5.08	3.715	5.533	3060	215	17240	1215	1453	102	5812	408
DMITUBA312SC	2"	2.375"	60.33	10	0.109	2.77	2.700	4.022	1270	90	7150	505	533	38	2132	152
				40	0.154	3.91	3.736	5.565	1820	130	10250	720	889	63	3556	252
				80	0.218	5.54	5.140	7.657	2640	185	14870	1045	1309	92	5236	368
DMITUBA312SC	3"	3.500"	88.90	10	0.120	3.05	4.434	6.605	940	65	5290	370	345	24	1380	96
				40	0.216	5.49	7.755	11.552	1730	120	9740	685	825	58	3300	232
				80	0.300	7.62	10.262	15.274	2277	159	12239	857	1087	76	4348	304
DMITUBA312SC	4"	4.400"	114.30	10	0.120	3.05	5.746	8.559	730	50	4090	290	234	16	936	64
				40	0.237	3.02	11.040	16.444	1460	105	8250	580	639	45	3556	180
				80	0.337	8.56	14.998	22.322	1989	139	10693	749	911	64	3644	255
DMITUBA312SC	6"	6.625"	168.28	10	0.134	3.40	9.494	14.142	550	40	3080	215	141	10	564	40
				40	0.280	7.11	19.407	28.908	1160	80	6560	460	444	31	1776	124
				80	0.432	10.97	28.593	42.557	1731	121	9308	652	825	58	3300	231
DMITUBA312SC	8"	8.625"	219.08	10	0.148	3.76	13.711	20.423	460	30	2610	185	124	9	496	36
				40	0.322	8.18	29.218	43.520	1020	70	5770	405	395	28	1580	112
				80	0.500	12.70	43.428	65.637	1540	108	8277	579	770	54	3080	216



**E: Espesor**  
**TN: Tamaño Nominal**



**TUBING**

**Tubing**  
Tipo 304 / 316L

CLAVE	TAMAÑO NOMINAL	C	ESPESOR DE PARED		PRESIÓN INTERIOR		PRESIÓN DE RUPTURA		PRESIÓN EXTERIOR		PRESIÓN APLASTAMIENTO	
			inche	mm	Lb/pie	kg/m	(PSI)	kg/cm <sup>2</sup>	(PSI)	kg/cm <sup>2</sup>	(PSI)	kg/cm <sup>2</sup>
DMI TUBING	1/4"	22	0.028	0.71	3270	230	17190	1210	2510	175.6	10040	706.5
		20	0.035	0.89	4200	295	22100	1555	3345	235.4	13380	941.6
		18	0.049	1.24	5500	395	29000	2145	4440	315.2	17760	1276.4
DMI TUBING	5/16"	22	0.028	0.71	2560	180	13490	950	1980	139.3	1920	557.3
		20	0.035	0.89	3280	230	17240	1215	2510	176.6	10040	706.5
		18	0.049	1.24	4750	335	24990	1760	3950	278.0	15800	1111.8
DMI TUBING	3/8"	22	0.028	0.71	2110	150	11100	780	1645	115.8	6580	463.0
		20	0.035	0.89	2690	190	14190	995	1980	139.3	7920	557.3
		18	0.049	1.24	3870	270	20340	1430	2890	203.4	11560	813.5
DMI TUBING	1/2"	22	0.028	0.71	1560	110	8190	575	1030	72.5	4120	289.9
		20	0.035	0.89	1970	140	10390	730	1495	105.2	5980	420.8
		18	0.049	1.24	2820	200	14830	1045	2210	155.2	8840	622.1
DMI TUBING	5/8"	22	0.028	0.71	1230	85	6490	455	795	55.9	3180	223.4
		20	0.035	0.89	1560	110	8220	580	1030	72.5	4120	289.9
		18	0.049	1.24	2220	155	11660	820	1645	115.8	6580	463.0
DMI TUBING	3/4"	22	0.028	0.71	1020	70	5380	380	555	39.1	2220	156.2
		20	0.035	0.89	1290	90	6790	480	845	59.9	3380	237.9
		18	0.049	1.24	1830	130	9610	675	1360	95.7	5440	382.8
DMI TUBING	7/8"	22	0.028	0.71	870	60	4590	325	430	30.3	1720	121.0
		20	0.035	0.89	1100	75	5790	405	625	44.0	2500	175.9
		18	0.049	1.24	1550	110	8180	575	1030	72.5	4120	289.9
DMI TUBING	1"	22	0.028	0.71	760	55	4000	280	340	23.9	1360	95.7
		20	0.035	0.89	960	70	5050	355	470	33.1	1880	132.3
		18	0.049	1.24	1350	95	7110	500	900	63.3	3600	253.3
DMI TUBING	1-1/4"	22	0.028	0.71	630	45	3330	235	240	16.9	960	67.6
		20	0.035	0.89	760	55	4010	280	340	23.9	1360	95.7
		18	0.049	1.24	1070	70	5640	395	585	41.2	2340	164.7
DMI TUBING	1-1/2"	22	0.028	0.71	530	35	2780	195	175	12.3	700	49.3
		20	0.035	0.89	630	45	3330	235	240	16.9	960	67.6
		18	0.049	1.24	890	65	4880	330	430	30.3	1720	121.0
DMI TUBING	2"	22	0.028	0.71	430	30	2200	155	155	10.9	540	38.8
		20	0.035	0.89	530	35	2780	195	175	12.3	700	49.3
		18	0.049	1.24	710	50	3720	260	300	21.1	1200	84.4
DMI TUBING	3"	22	0.028	0.71	330	25	1650	115	115	8.2	420	29.9
		20	0.035	0.89	430	30	2200	155	155	10.9	540	38.8
		18	0.049	1.24	530	35	2780	195	175	12.3	700	49.3
DMI TUBING	4"	22	0.028	0.71	230	15	1150	75	75	5.3	280	19.8
		20	0.035	0.89	330	25	1650	115	115	8.2	420	29.9
		18	0.049	1.24	430	30	2200	155	155	10.9	540	38.8



**GUADALAJARA, JAL.**

**Av. 18 de Marzo #747  
Col. La Nogalera.  
C.P. 44470**

**(33) 1204 - 9757  
(33) 1204 - 9758  
(33) 1204 - 9759**

**ventas@diminox.com**

**AGUASCALIENTES, AGS.**

**Av. Aguascalientes Sur #114  
Col. Prados del Sur.  
C.P. 20280**

**(449) 473 - 0877  
(449) 473 - 0881**

**ventasags@diminox.com**

**WWW.DIMINOX.COM**



 **@Diminox Acero Inoxidable**

 **Diminox Acero Inoxidable**

 **Diminox**

 **@diminox\_inox**

 **Diminox Acero Inoxidable**